

Cino FuzzyScan Scanners F/W Upgrade Procedure (Rev. B5)

March, 25, 2016

Contents of this document

This document offers information about:

- * System requirements for FuzzyScan corded/Fixed Mount/Bluetooth/Wi-Fi scanners/Scan Engine/Scan Module F/W upgrade
- * Applicable Models
- * F/W upgrade procedure for FuzzyScan corded/Fixed Mount/Bluetooth scanner/Scan Engine and Scan Module by **FuzzyScan PowerTool**
- * F/W upgrade procedure for FuzzyScan Wi-Fi scanner by **FuzzyScan PowerTool WF**

System requirements

One of the following operating systems must be fully installed and running on the system before installing this driver:

- Windows 8.1 or above
- Windows 8 or above
- Windows 7 32-bit SP1 or above
- Windows 7 64-bit SP1 or above
- Windows Vista SP2 or above
- Windows XP SP3 or above

Upgrade Utility

FuzzyScan PowerTool

FuzzyScan PowerTool WF

You can download the latest tool from Cino website: <http://www.cino.com.tw>

Applicable Models

- *Corded Scanner
 - A700 Series: A770
 - A600 Series: A670
 - F400 Series: F430, F460, F468 (EOL)
 - F500 Series: F560, F568
 - F600 Series: F660, F680, F688
 - L600 Series: L680, L688
 - F700 Series: F760, F765, F780, F788
 - L700 Series: L780, L788

- *Fixed Mount Scanner FM480 Series
 FA470 Series


- *Cordless Scanner A700 Series: A770BT
 A600 Series: A670BT
 F600 Series: F680BT, F688BT
 L600 Series: L680BT, L688BT
 F700 Series: F780BT, F788BT
 L700 Series: L780BT, L788BT
 PX600 Series: PF680BT, PL680BT, PA670BT
 Smart Cradle: HB2110/HB2112/HB3112

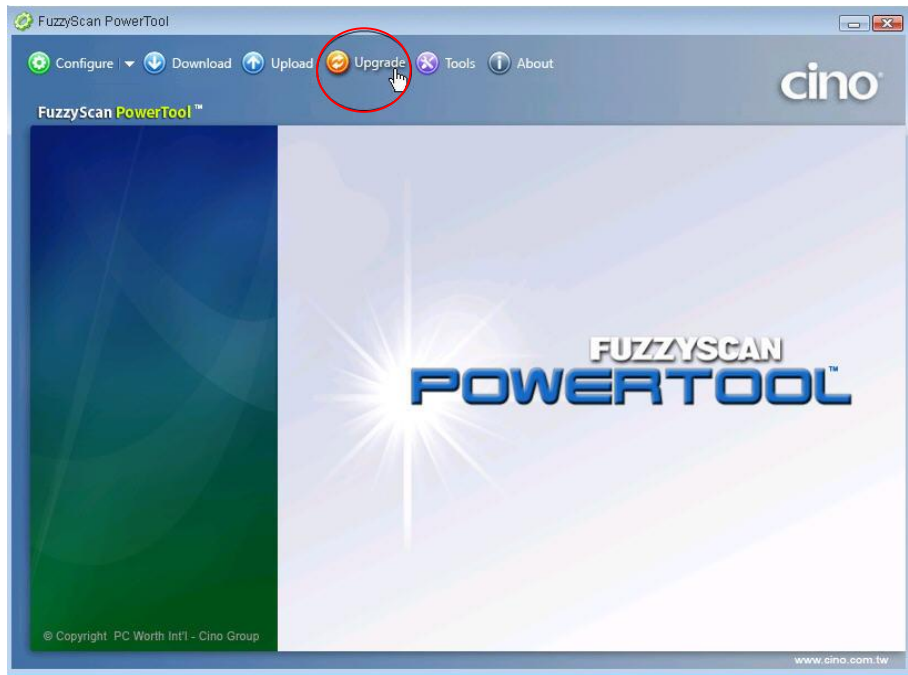
- *Cordless Wi-Fi Scanner L700WD Series: L780WD, L788WD
 F700WD Series: F790WD, F798WD, F780WD, F788WD

- *Scan Engine SE380 Series: F380-0, F380-1, F380-2, F380-3
 SE388 Series: F388-0, F388-1, F388-2, F388-3

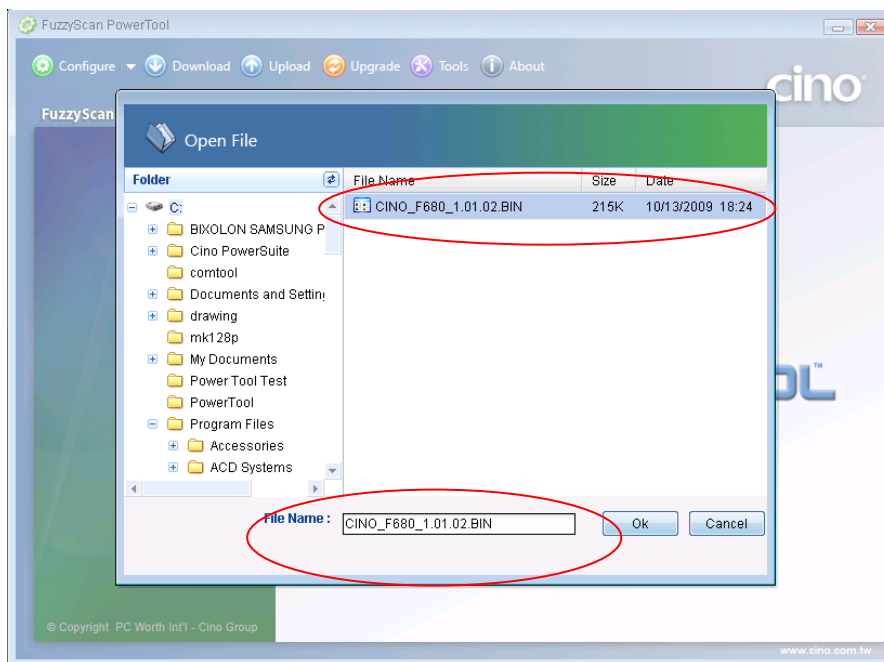
- *Scan Module SM380 Series
 SM5700 Series

F/W upgrade Procedure for FuzzyScan Corded Scanner/Fixed Mount Scanners/Scan Engine/Scan Module

1. Ensure **FuzzyScan PowerTool** has been installed properly.
2. Double click the icon  (the shortcut of FuzzyScan PowerTool) on the desktop to launch the **FuzzyScan PowerTool**.
3. Connect the host device with FuzzyScan Corded scanner by shipped USB/RS232 cable.
4. Click "**Upgrade**" button on menu bar "**FuzzyScan PowerTool**".



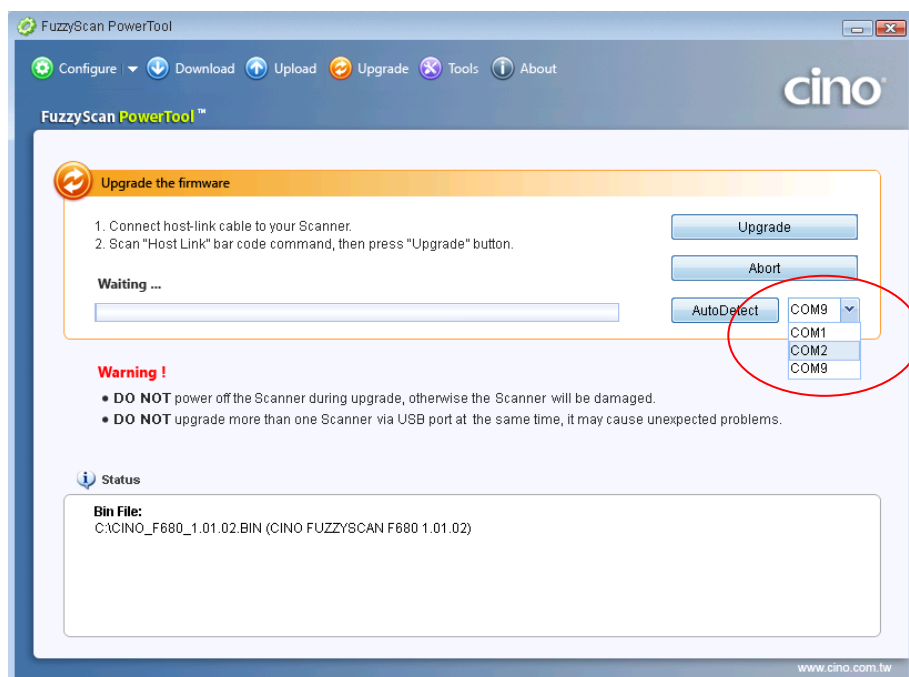
5. Select the proper F/W to proceed F/W upgrade, then click "Ok".



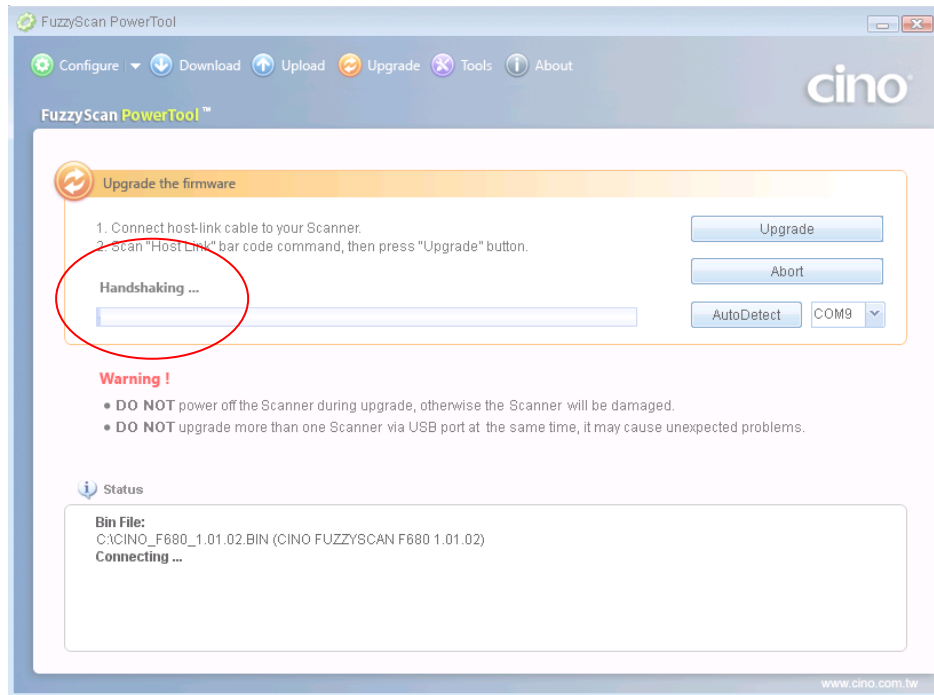
6. Use your scanner to scan the correct host interface command code listed in the shipped Quick Start Guide according to the host interface you use. (Listed in the section of **Host Interface Quick Set** of the Quick Start Guide)



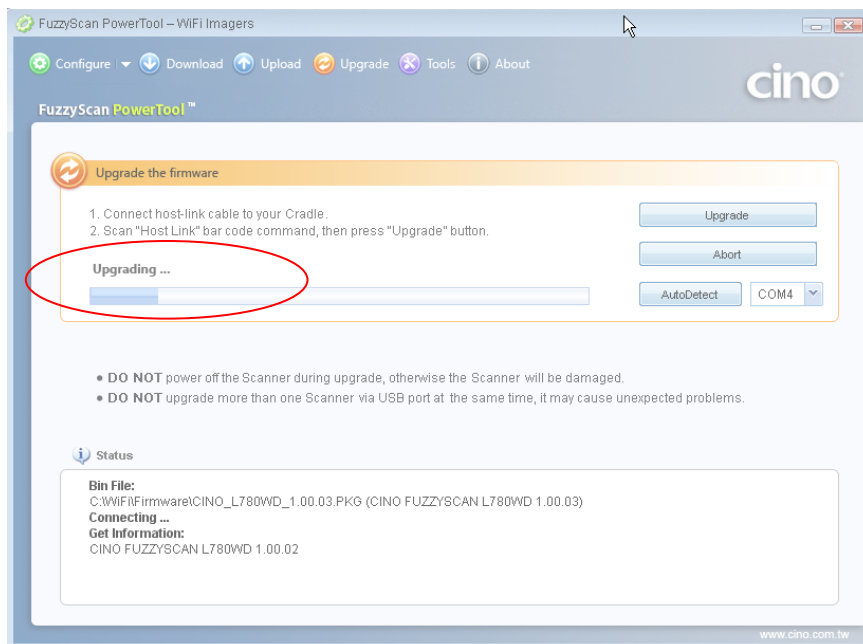
7. Use your scanner to scan the **PowerTool Host Link** in the Quick Start Guide. (Listed in the section of **System Commands** of the Quick Start Guide). The indicator on the FuzzyScan corded scanner will lights red for several seconds and then goes out.
8. Click the COM Port drop-down list and select the proper COM Port (You can check the COM Port no. for FuzzyScan scanner through **Windows Device manager – COM & LPT** on your computer) or click "**Auto Detect**".



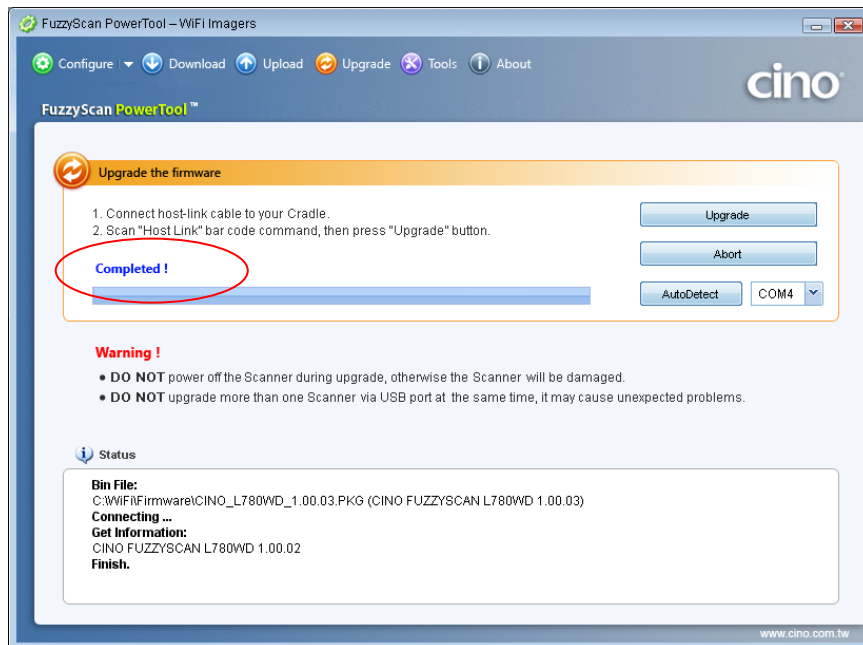
9. Click **Upgrade** to start upgrade process. You can see **Handshaking...** showing on FuzzyScan PowerTool and the status indicator of scanner flashes green.



10. You can hear short click beeps and the status indicator of scanner lights red during the upgrade process. You can check the upgrade process from the blue process bar indicated below.



11. When 4 beep sounds is heard, the upgrade process is completed successfully. The status indicator of scanner blinks green and red alternatively. You will see "Completed" and "Finish" showing on **FuzzyScan PowerTool**.




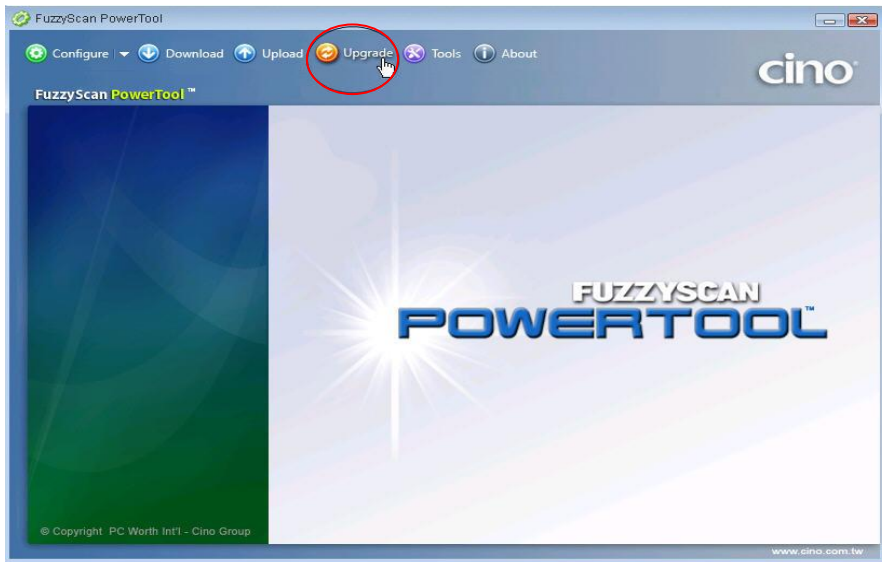
F/W upgrade Procedure for FuzzyScan Bluetooth Scanner and Smart Cradle

The scanner and the smart cradle must be under uninstalled status before doing the F/W upgrade. The status indicator of the scanner and the side indicators of the cradle show alternative red and green alternatively.

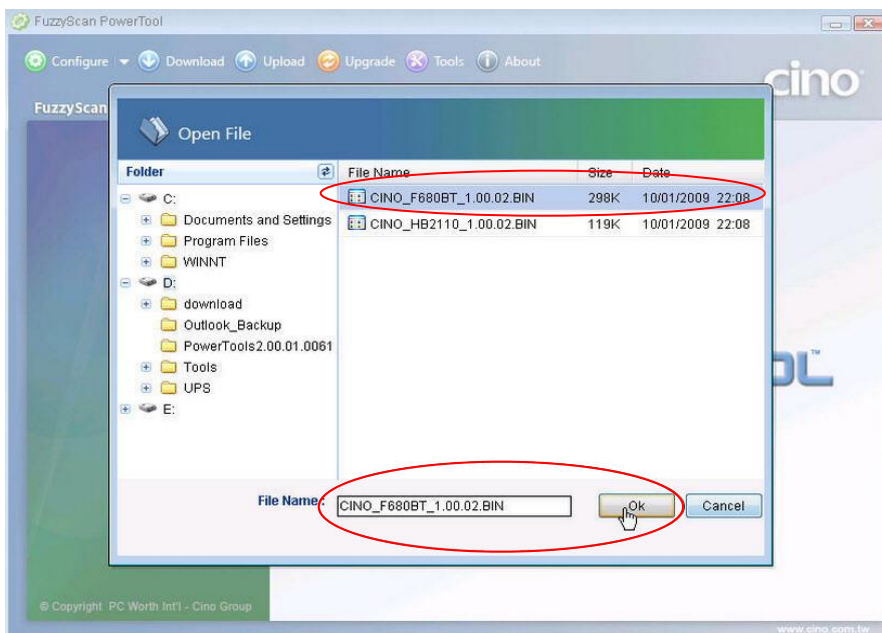
A. Bluetooth Scanner Firmware Upgrade

a. F/W upgrade through Smart Cradle/Charging Cradle

1. Ensure **FuzzyScan PowerTool** has been installed properly.
2. Double click the icon  (the shortcut of FuzzyScan PowerTool) on the desktop to launch the **FuzzyScan PowerTool**.
3. Connect the host device with FuzzyScan Smart Cradle/Charging Cradle by shipped USB/RS232 cable.
4. Click "**Upgrade**" button on menu bar "**FuzzyScan PowerTool**".



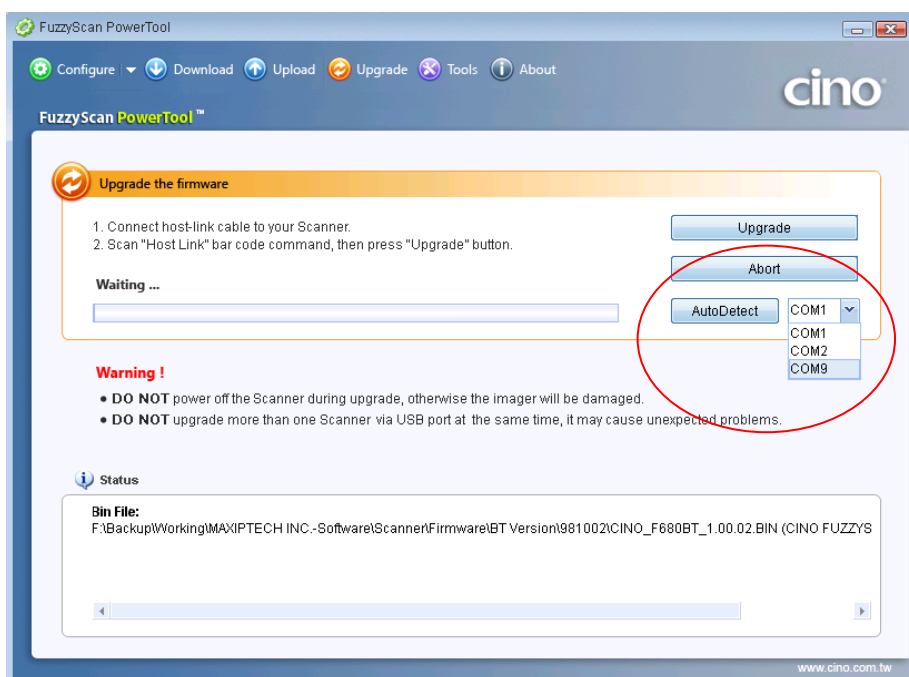
5. Select the proper F/W to proceed F/W upgrade, then click "Ok".



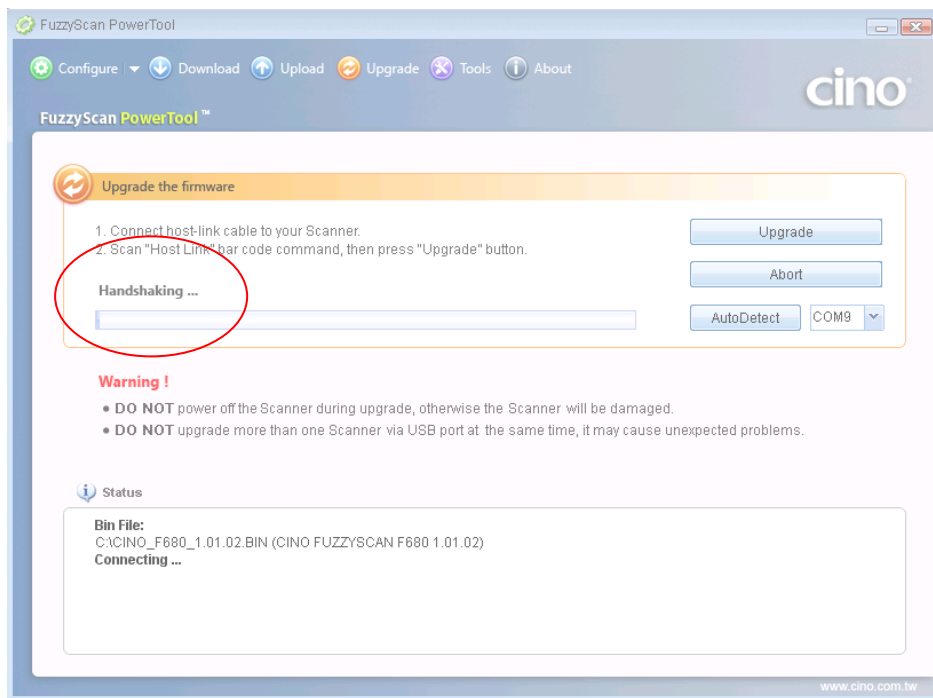
6. Use your scanner to scan the correct host interface command code listed in the shipped Quick Start Guide according to the host interface you use. (Listed in the section of **Host Interface Quick Set** of the Quick Start Guide)



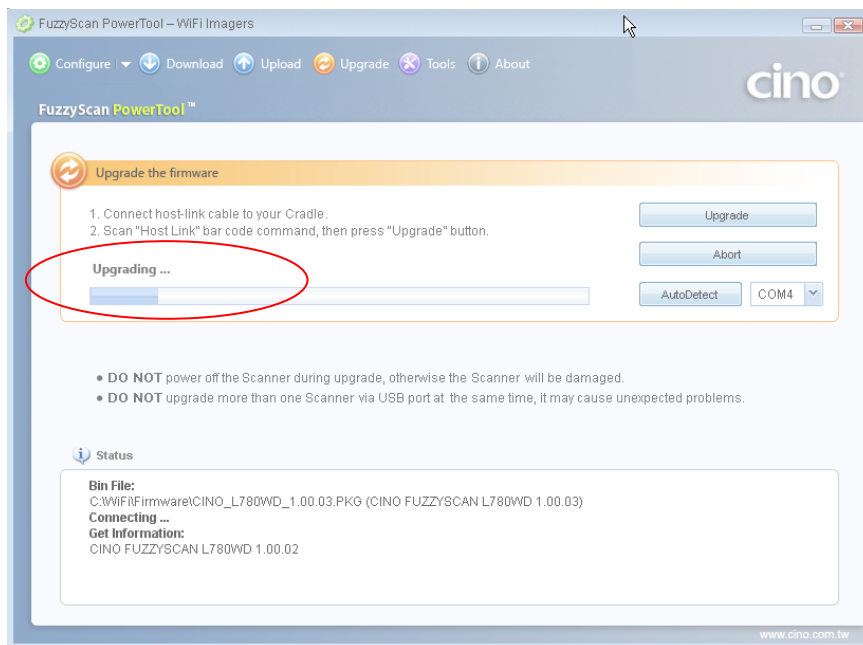
7. Use your scanner to scan the **PowerTool Host Link** in the Quick Start Guide. (Listed in the section of **System Commands** of the Quick Start Guide). The indicator on the FuzzyScan corded scanner will lights red for several seconds and then goes out.
8. Place the Scanner onto the cradle. Click the COM Port drop-down list and select the proper COM Port (You can check the COM Port no. for FuzzyScan scanner through **Windows Device manager – COM & LPT** on your computer) or click "**Auto Detect**".



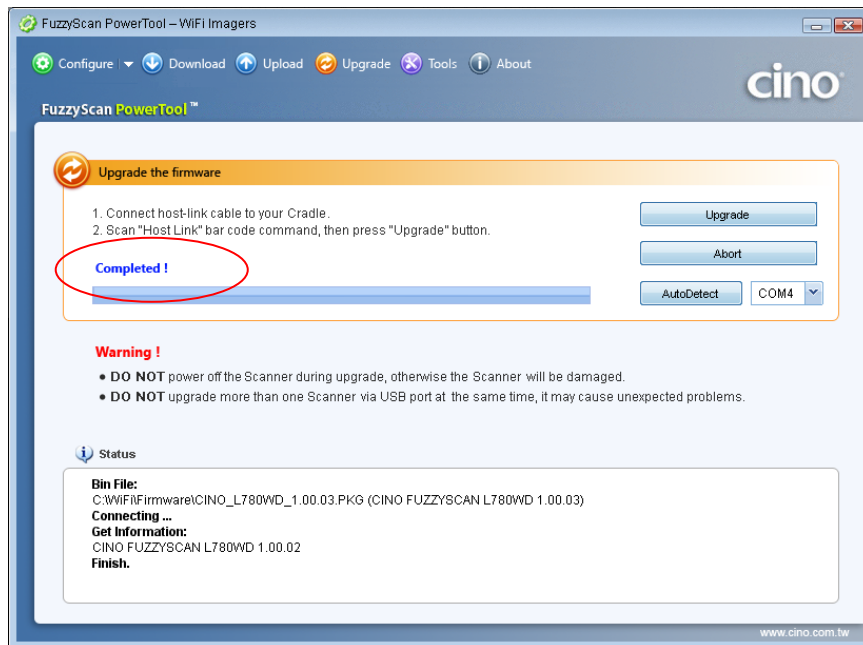
9. Click **“Upgrade”** to start upgrade process. You can see **“Handshaking...”** showing on FuzzyScan PowerTool and the status indicator of scanner flashes green.



10. You can hear short click beeps and the status indicator of scanner lights red during the upgrade process. You can check the upgrade process from the blue process bar indicated below.




11. When 4 beep sounds is heard, the upgrade process is completed successfully. The status indicator of scanner blinks green and red alternatively. You will see "Completed" and "Finish" showing on **FuzzyScan PowerTool**.

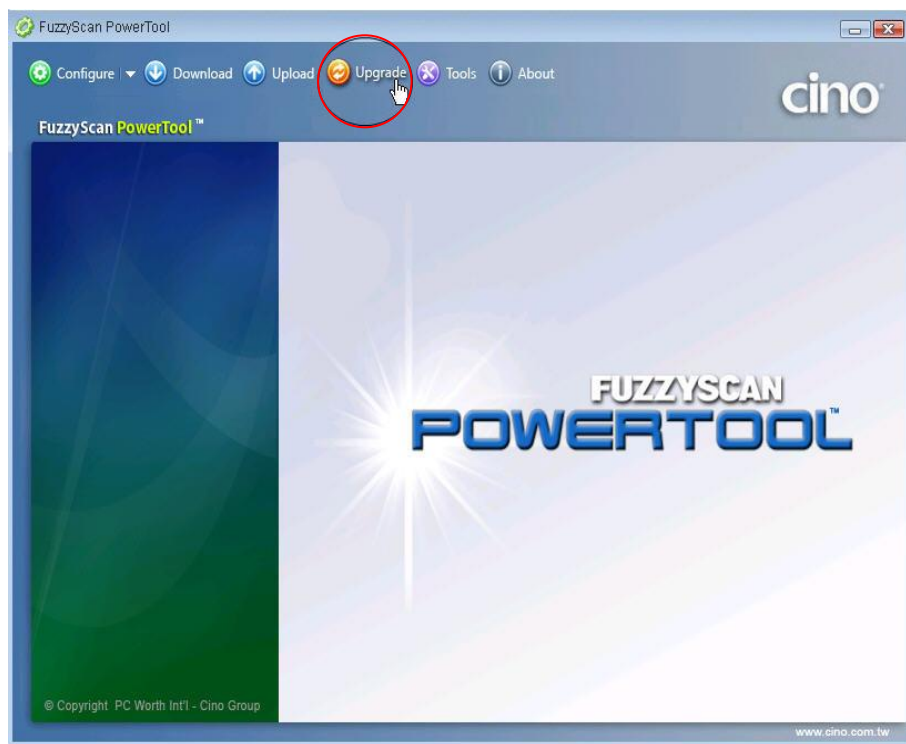


B. Smart Cradle

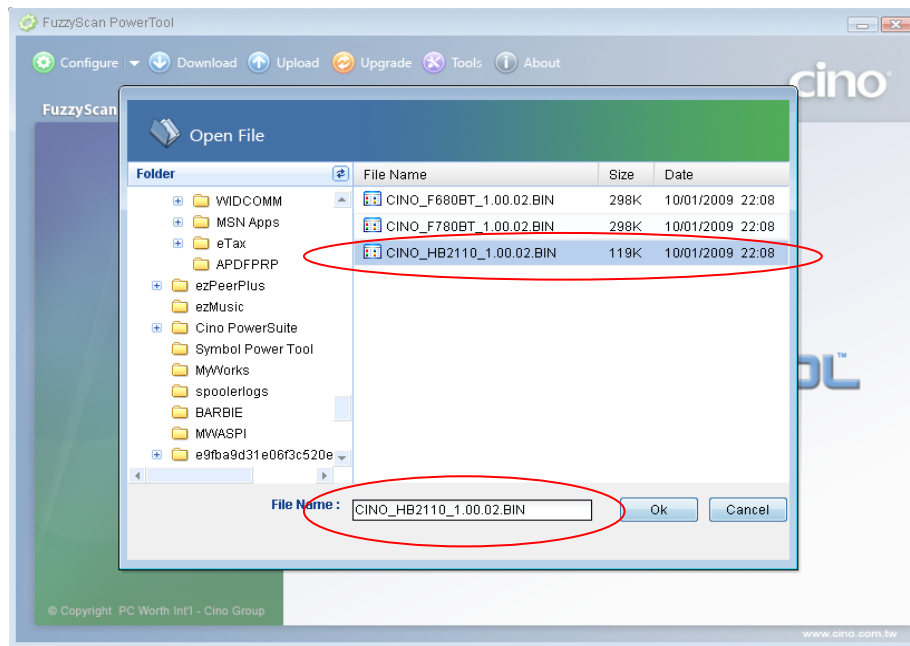


Smart Cradle **without** USB Bus Power Switch

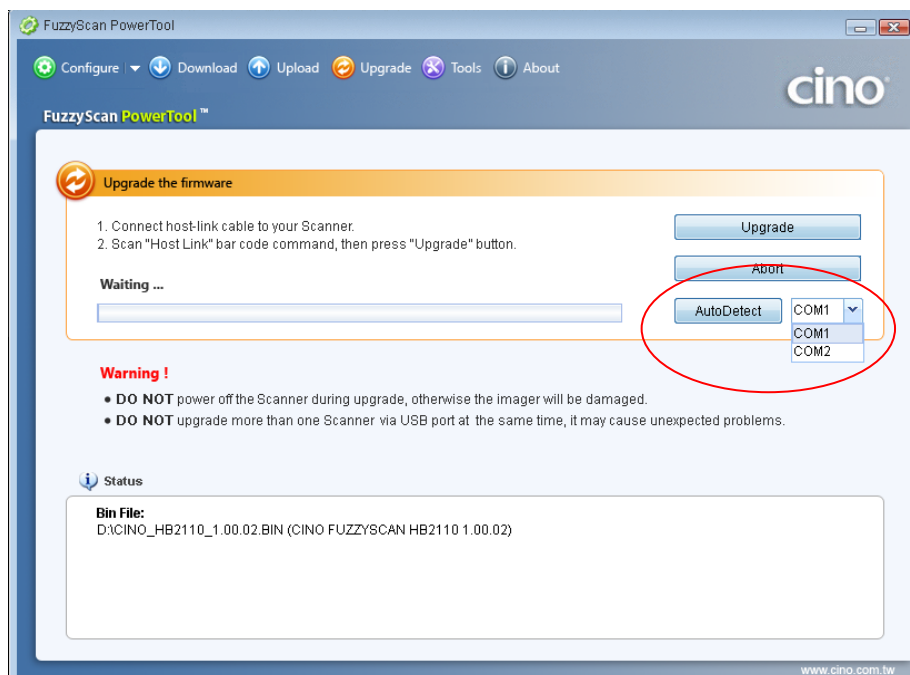
1. Ensure **FuzzyScan PowerTool** has been installed properly.
2. Double click the icon  (the shortcut of FuzzyScan PowerTool) on the desktop to launch the **FuzzyScan PowerTool**.
3. Connect the host device with FuzzyScan Smart Cradle/Charging Cradle by shipped USB/RS232 cable.
4. Plug the AC power plug into the AC wall socket.
5. Press and hold the Paging/Reset button, then connect the USB/RS232 cable to the host device and the smart cradle. After that, plug the DC power cord of the power supply unit into the DC power jack of the smart cradle. You will see the left side indicator of the smart cradle flashing green at regular interval. Then release the Paging/Reset button.
6. Click "**Upgrade**" on "**FuzzyScan PowerTool**".



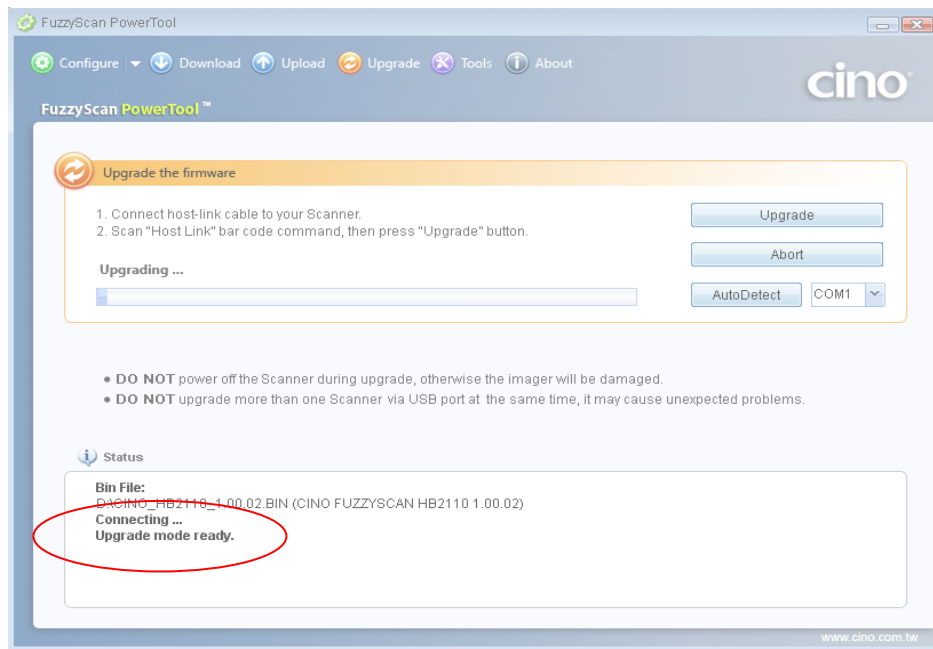
7. Select the proper F/W to proceed F/W upgrade, then click "Ok".



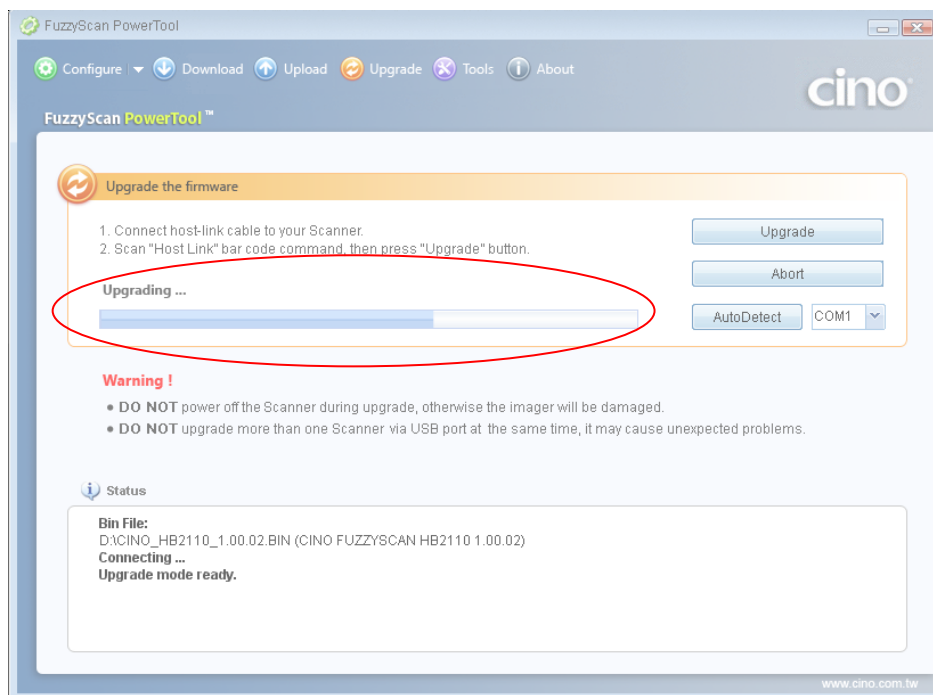
8. Use the COM Port drop down list to select the COM Port you want to use or click "Auto Detect".



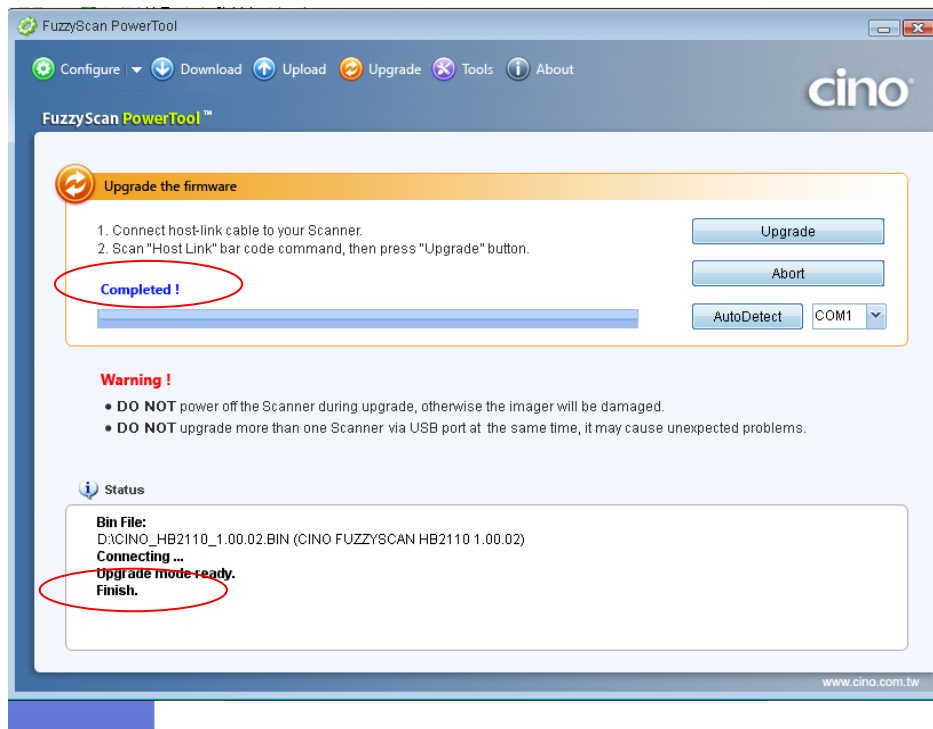
9. Click "Upgrade" to start upgrade process. You will see "Connecting...Upgrade mode ready" showing on PowerTool.



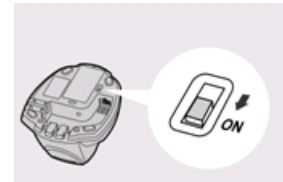
10. You will hear short click beeps during upgrade process and the side indicators of smart cradle will turn steady red. You can check the upgrade process from the blue bar indicated below.





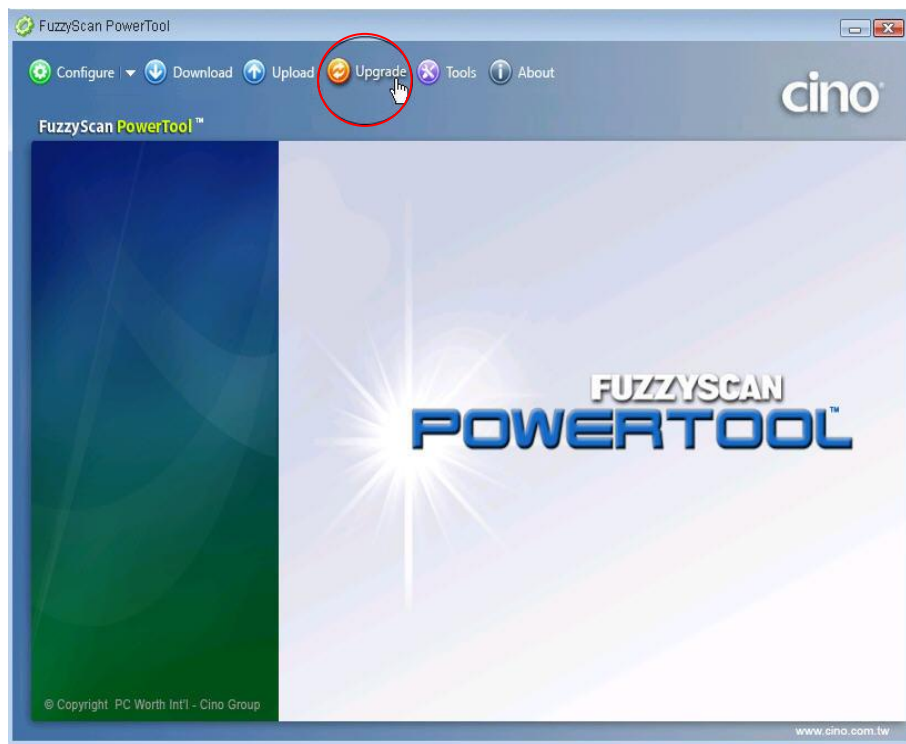
11. You will hear 4 beeps after the upgrade process is completed successfully. The side indicators of smart cradle will give alternative green and red blinks. You will see "Completed" and "Finish" showing on PowerTool to indicate the success of F/W upgrade.



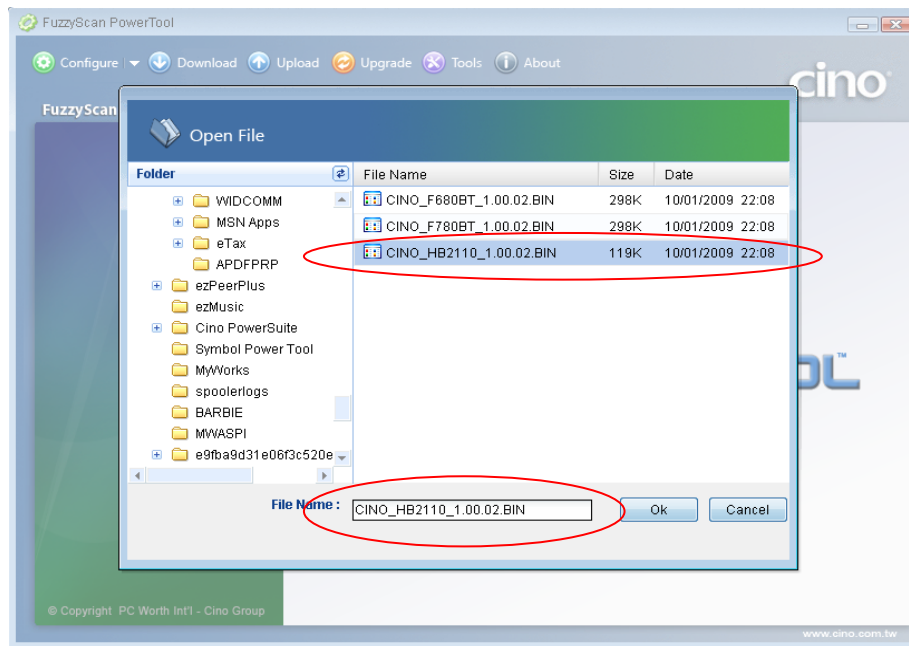
Smart Cradle **with** USB Bus Power Switch (**Switch off**)



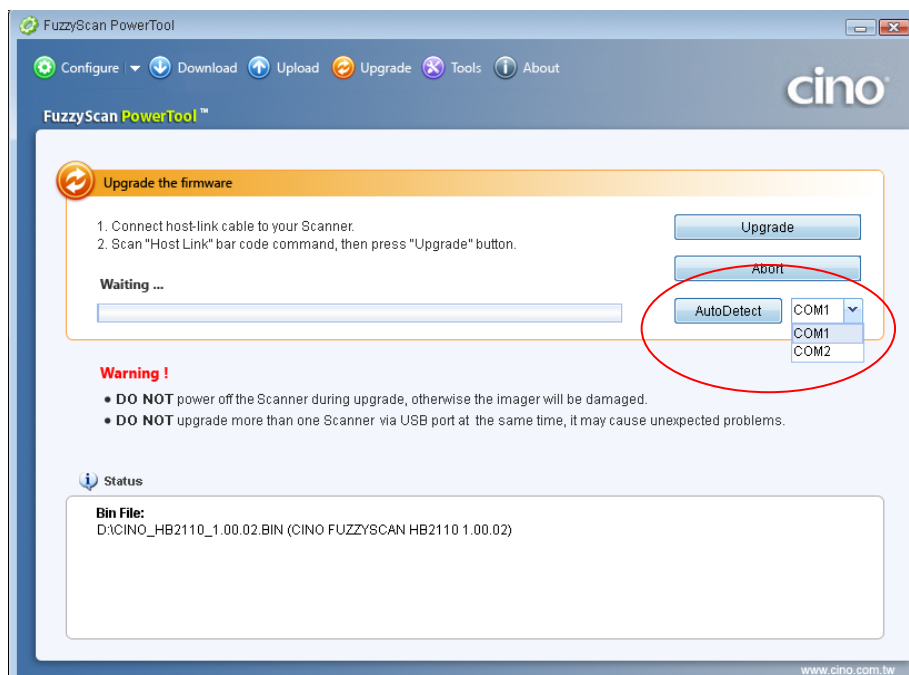
1. Ensure **FuzzyScan PowerTool** has been installed properly.
 2. Double click the icon  (the shortcut of FuzzyScan PowerTool) on the desktop to launch the **FuzzyScan PowerTool**.
 2. Plug the AC power plug into the AC wall socket.
 4. Press and hold the Paging/Reset button, then connect the USB/RS232 cable to the host device and the smart cradle. After that, plug the DC power cord of the power supply unit into the DC power jack of the smart cradle. You will see the left side indicator of the smart cradle flashing green at regular interval. Then release the Paging/Reset button.
-  **If only USB2.0 is available in your host device, you are recommended to use power supply as power source. Keep the USB bus power switch on "OFF".**
5. Click "**Upgrade**" on "**FuzzyScan PowerTool**".



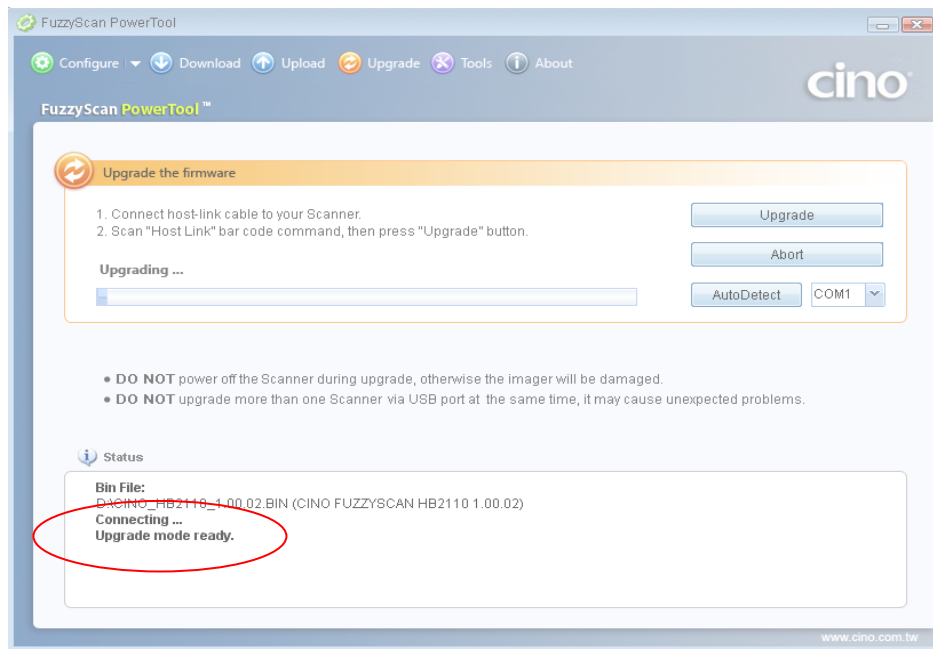
6. Select the proper F/W to proceed F/W upgrade, then click "Ok".



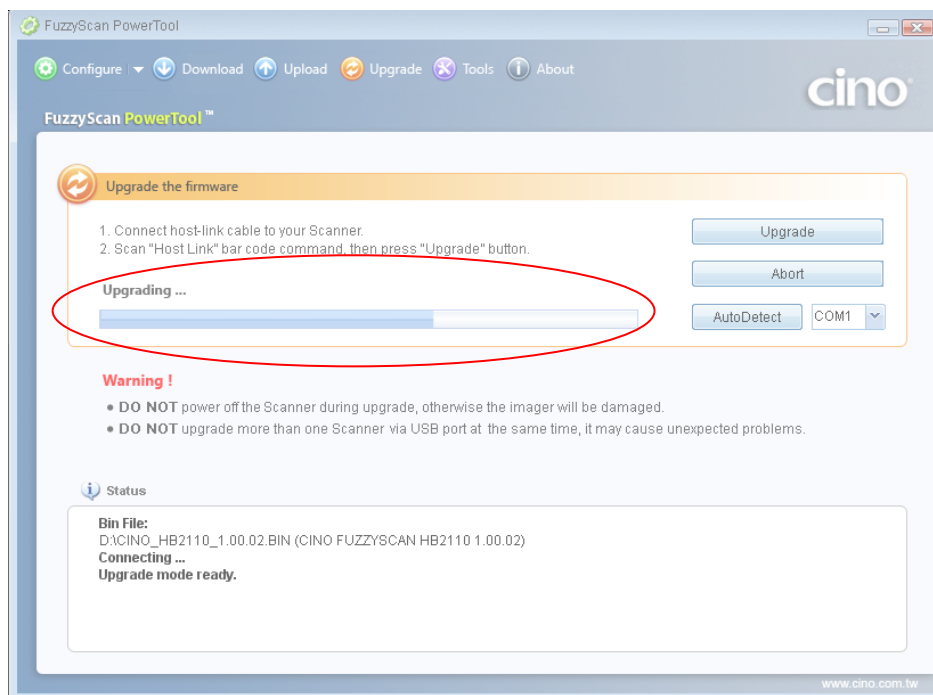
7. Use the COM Port drop down list to select the COM Port you want to use or click "Auto Detect".



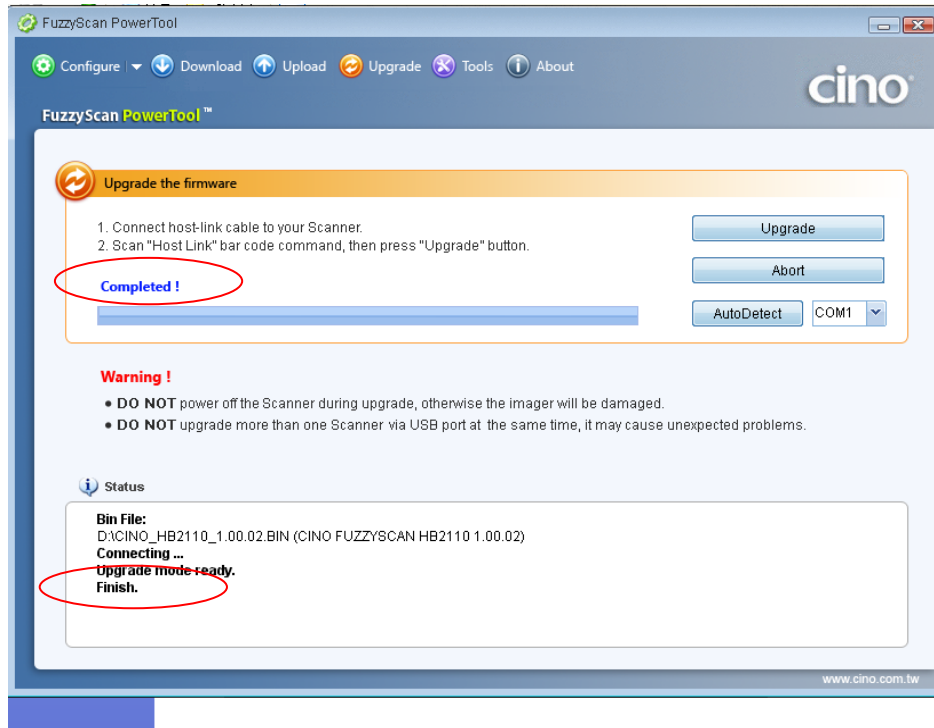
8. Click "Upgrade" to start upgrade process. You will see "Connecting...Upgrade mode ready" showing on PowerTool.



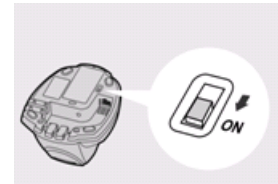
9. You will hear short click beeps during upgrade process and the side indicators of smart cradle will turn steady red. You can check the upgrade process from the blue bar indicated below.





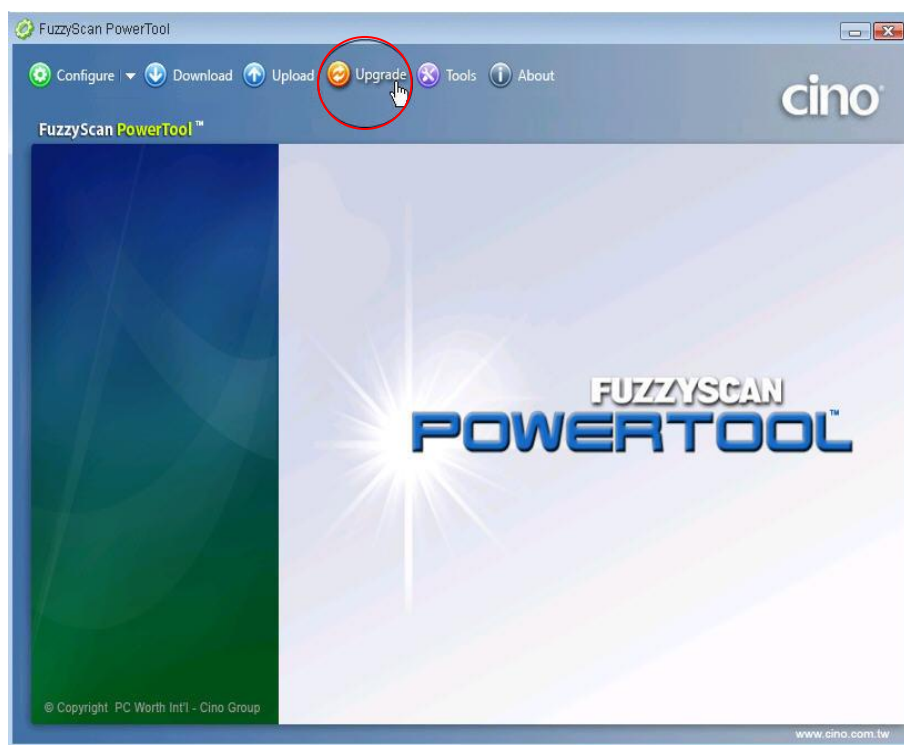
10. You will hear 4 beeps after the upgrade process is completed successfully. The side indicators of smart cradle will give alternative green and red blinks. You will see "Completed" and "Finish" showing on PowerTool to indicate the success of F/W upgrade.



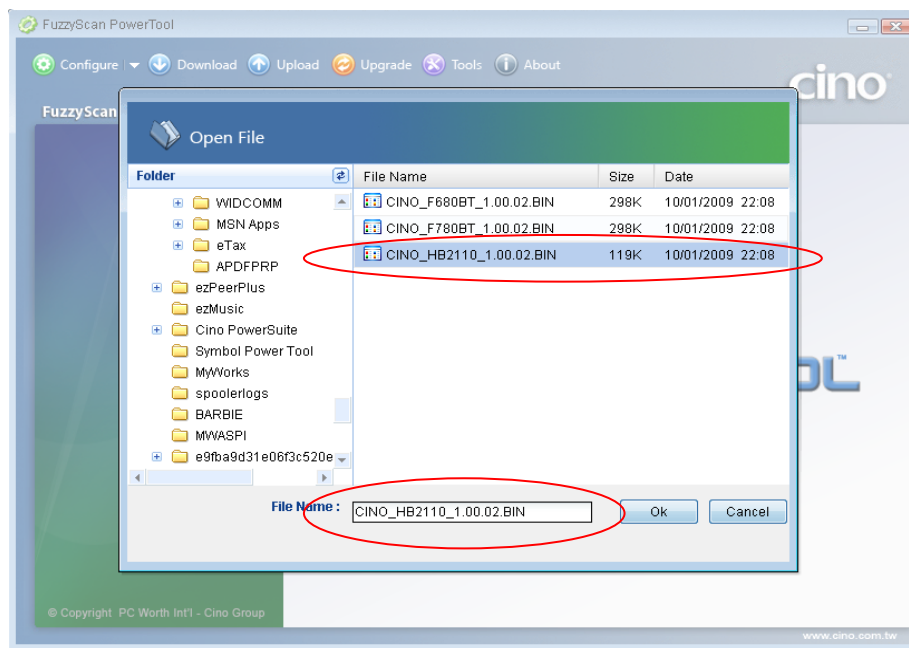
Smart Cradle **with** USB Bus Power Switch (**Switch on**)



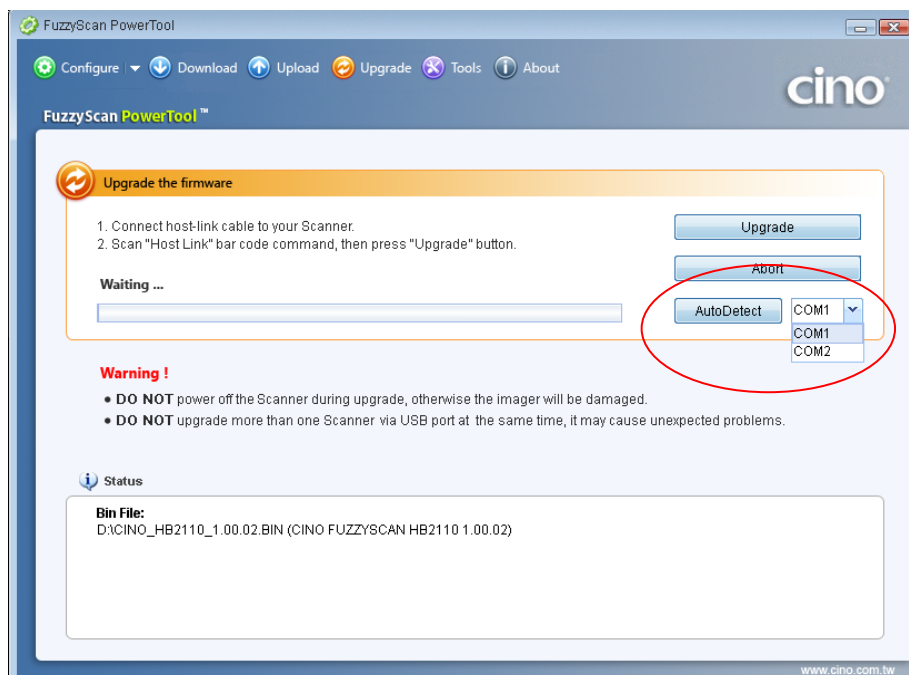
1. Ensure **FuzzyScan PowerTool** has been installed properly.
2. Double click the icon  (the shortcut of FuzzyScan PowerTool) on the desktop to launch the **FuzzyScan PowerTool**.
3. RS232 cable:
Plug the AC power plug into the AC wall socket. Press and hold the Paging/Reset button, then connect the RS232 cable to the host device and the smart cradle. After that, plug the DC power cord of the power supply unit into the DC power jack of the smart cradle. You will see the left side indicator of the smart cradle flashing green at regular interval. Then release the Paging/Reset button.
USB cable:
Press and hold the Paging/Reset button, then connect the USB cable to the host device and the smart cradle. You will see the left side indicator of the smart cradle flashing green at regular interval. Then release the Paging/Reset button.
 **If USB3.0 is available in your host device, you can use USB bus power feature by sliding the switch to "ON", without having to use the external power supply.**
4. Click "**Upgrade**" on "**FuzzyScan PowerTool**".



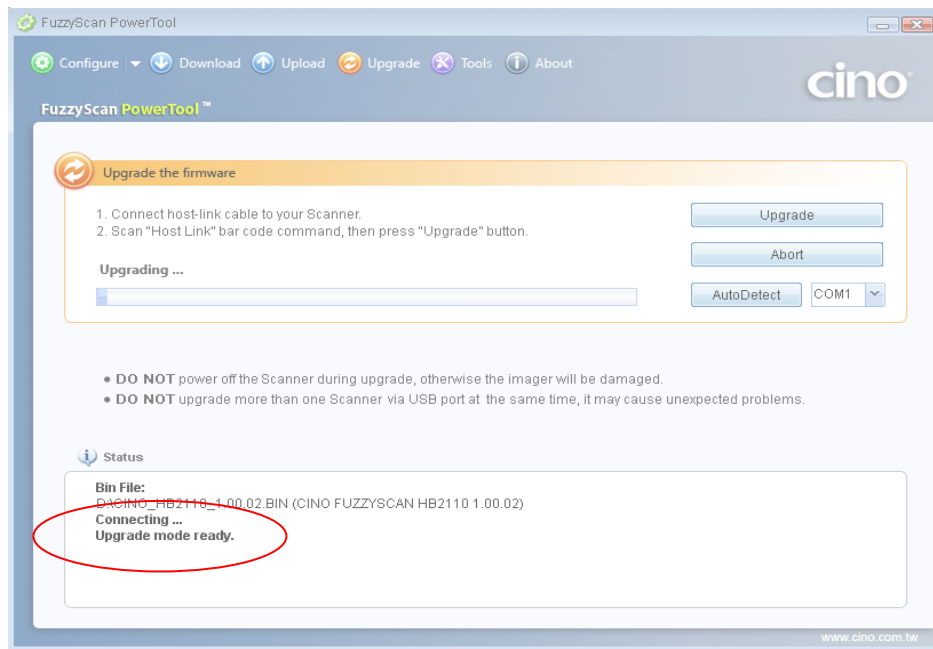
5. Select the proper F/W to proceed F/W upgrade, then click "Ok".



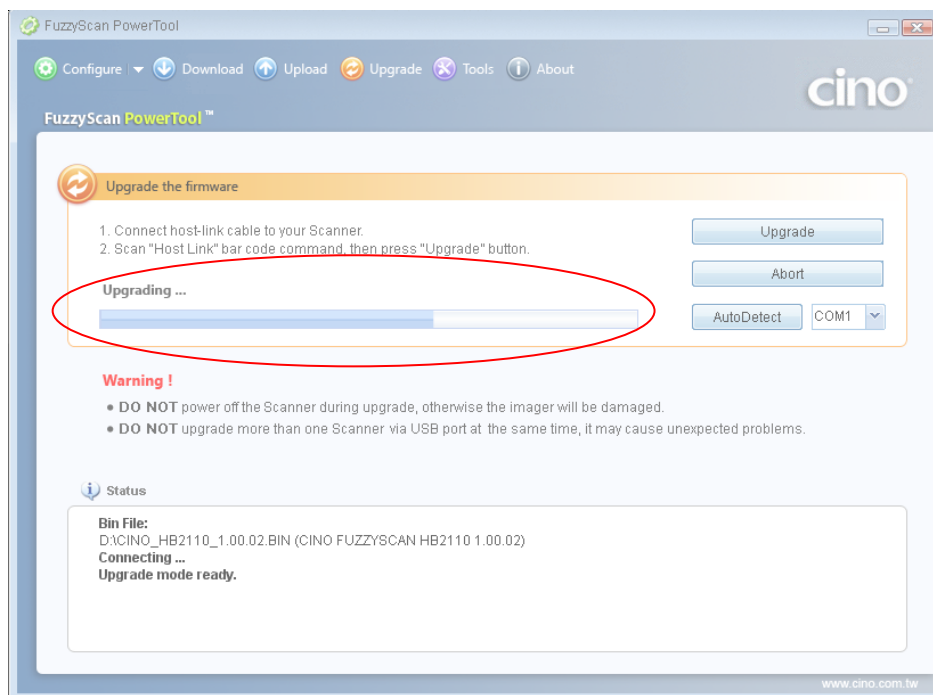
6. Use the COM Port drop down list to select the COM Port you want to use or click "Auto Detect".



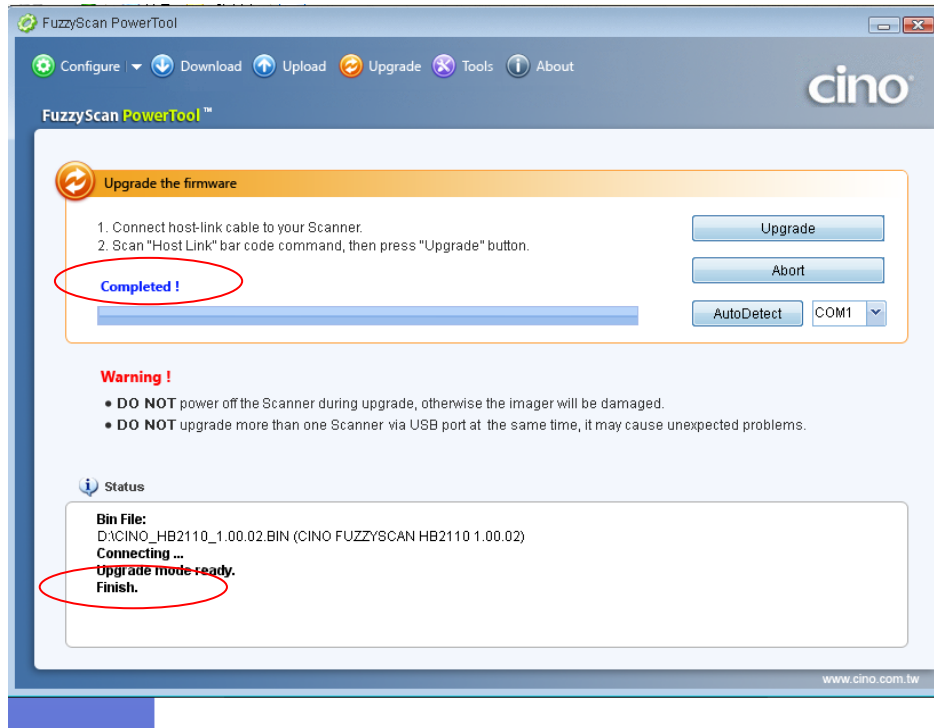
7. Click "Upgrade" to start upgrade process. You will see "Connecting...Upgrade mode ready" showing on PowerTool.




8. You will hear short click beeps during upgrade process and the side indicators of smart cradle will turn steady red. You can check the upgrade process from the blue bar indicated below.

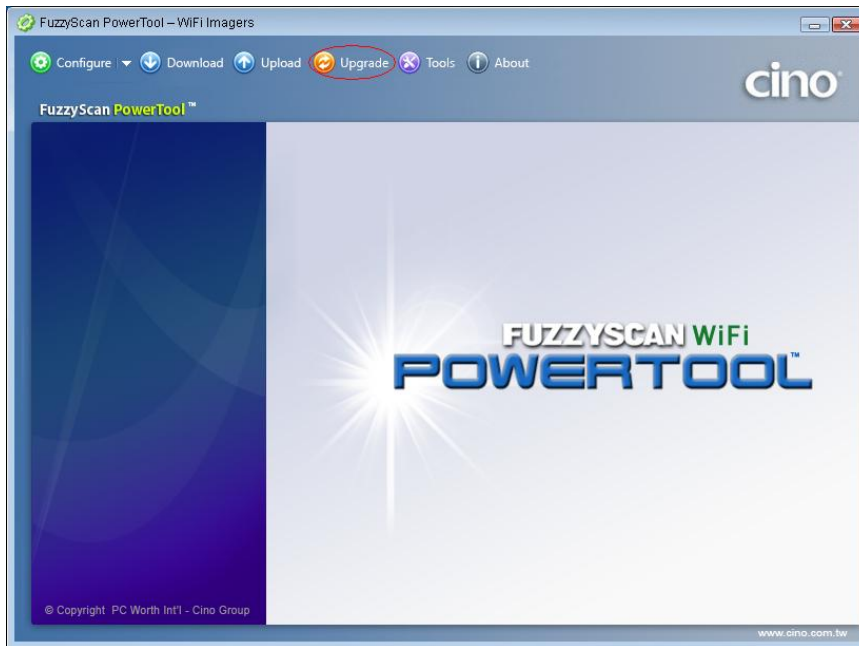


9. You will hear 4 beeps after the upgrade process is completed successfully. The side indicators of smart cradle will give alternative green and red blinks. You will see "Completed" and "Finish" showing on PowerTool to indicate the success of F/W upgrade.

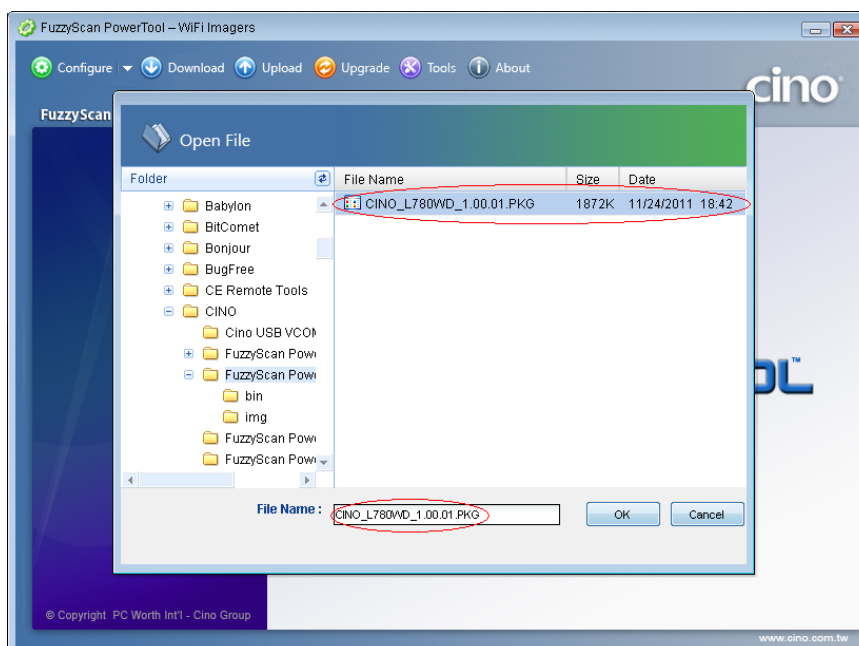


F/W upgrade Procedure for FuzzyScan Wi-Fi Scanner

1. Ensure **FuzzyScan PowerTool WF** has been installed properly.
2. Double click the icon  (the shortcut of FuzzyScan PowerTool WF) on the desktop to launch the **FuzzyScan PowerTool WF**.
3. Connect the host device and charging cradle by shipped USB cable.
4. Plug the AC power plug of the power supply unit into the AC wall socket, then plug the DC power cord of the power supply unit into the DC jack of the charging cradle.
5. Click "**Upgrade**" button on menu bar "**FuzzyScan PowerTool WF**".



6. Goes to the directory where the F/W is stored. Select the correct F/W and then click "Ok".



- On the FuzzyScan Wi-Fi scanner, use the onboard joystick to enter “**SETUP**” ->“**Advanced**” -> “**Host Link Mode**”. Select the “**Yes**” and confirm on the prompt message.



SETUP



Advanced

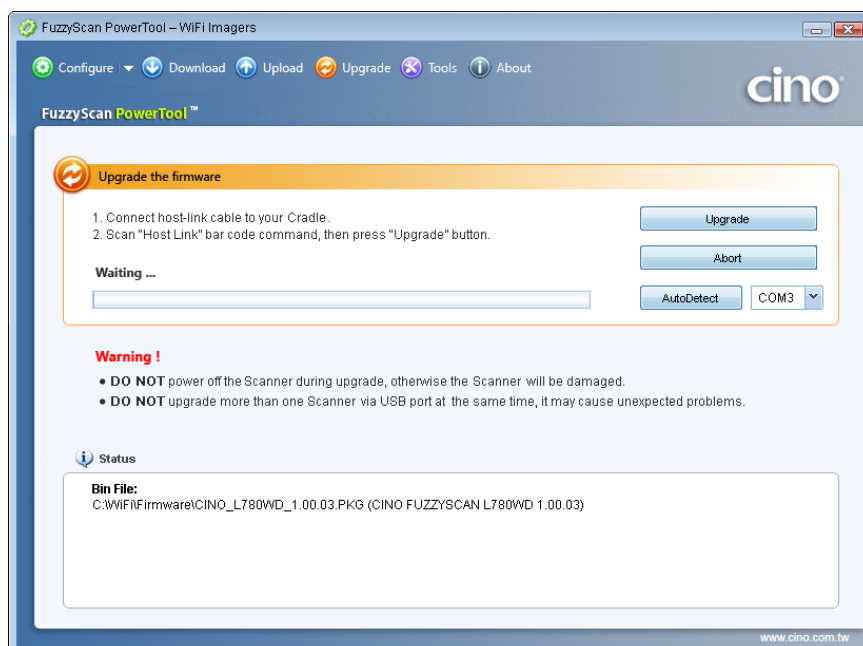


Host Link Mode

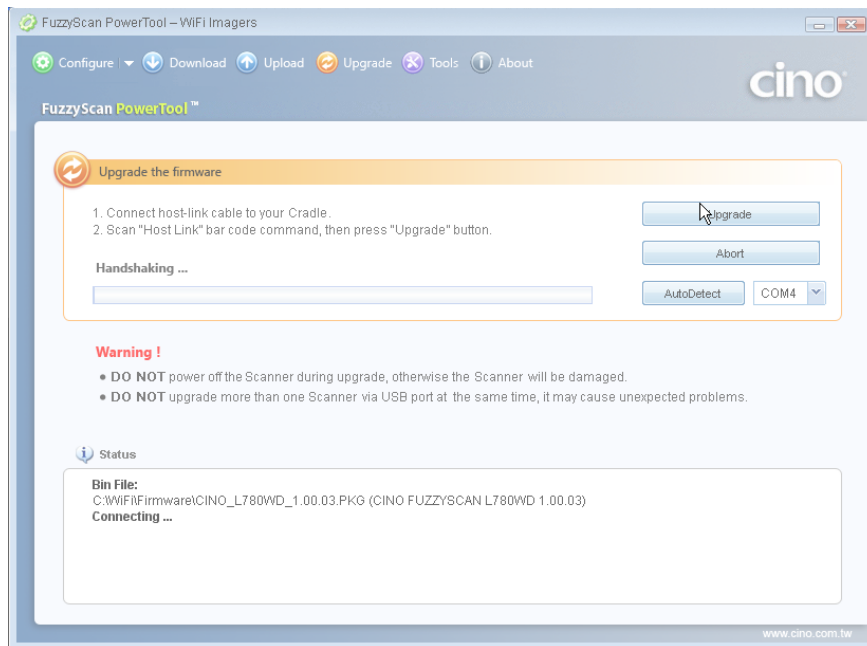
- Place the scanner onto the charging cradle and wait until the screen shows “**Host link mode**” and the status indicators light red.



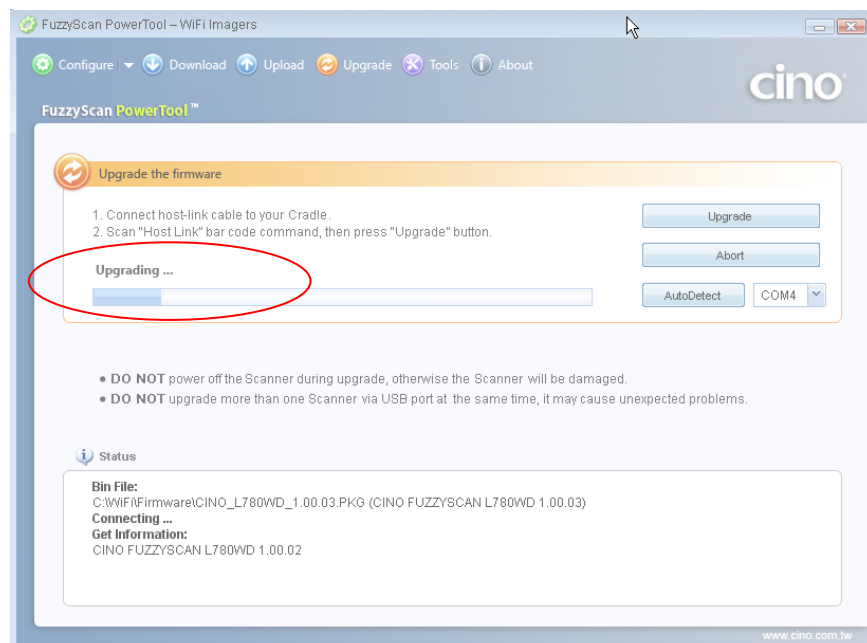
- Click the COM Port drop-down list and select the proper COM Port (You can check the COM Port no. for FuzzyScan scanner through **Windows Device manager – COM & LPT** on your computer) or click “**Auto Detect**”.



10. Click **Upgrade** to start upgrade process. You can see **Handshaking...** showing on FuzzyScan PowerTool WF and the status indicator of scanner flashes green.



11. You can hear short click beeps and the status indicator of scanner lights red during the upgrade process. You can check the upgrade process from the blue process bar indicated below.



12. When 4 beep sounds is heard, the upgrade process is completed successfully. The status indicator of scanner blinks green and red alternatively. You will see "Completed" and "Finish" showing on **FuzzyScan PowerTool WF**.

