

# **Link65 PC Software Management User Manual**

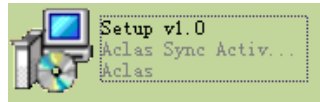
**Pinnacle Technology Corp.**



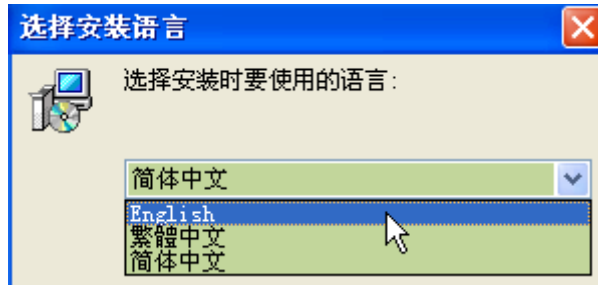
## Content

1	Program Installation.....	1
2	Link Scale to PC .....	4
3	Update Firmware .....	6
4	Update Font .....	7
5	Label Editor .....	8
5.1.	Menu Column Introduction.....	9
5.2.	How to Make Label.....	10
5.3.	How to modify label.....	12
4.3.1.	Modify a whole label .....	12
4.3.2.	Modify a Single Item .....	12
5.4.	Alignment Function .....	15
5.5.	Spacing setting .....	15
5.6.	Zoom in & Zoom out .....	15
6	PLU Information.....	16
6.1.	PLU Edition .....	16
6.2.	Weight Unit Edition .....	21
6.3.	Department/Group Edition.....	22
6.4.	Discount Schedule Edition.....	23
6.5.	Tare Edition .....	24
6.6.	Text Message Edition .....	25
6.7.	Custom Barcode Edition .....	26
6.8.	Notice Information Edition .....	27
6.9.	Hotkey .....	28
6.9.1.	Hotkey Edition.....	28
6.9.2.	Hotkey Installation.....	30
7	Synchronous Data .....	31
8	Import/Export Data .....	32
9	Change Password.....	32
10	Change Style .....	33
11	Transform Language and Modify Translation .....	33
12	Package Type .....	35
11.1.	Fixed Weight Mode .....	35
11.2.	Fixed Price Mode.....	35
11.3.	Fixed Weight and Price Mode (Gift Basket).....	36

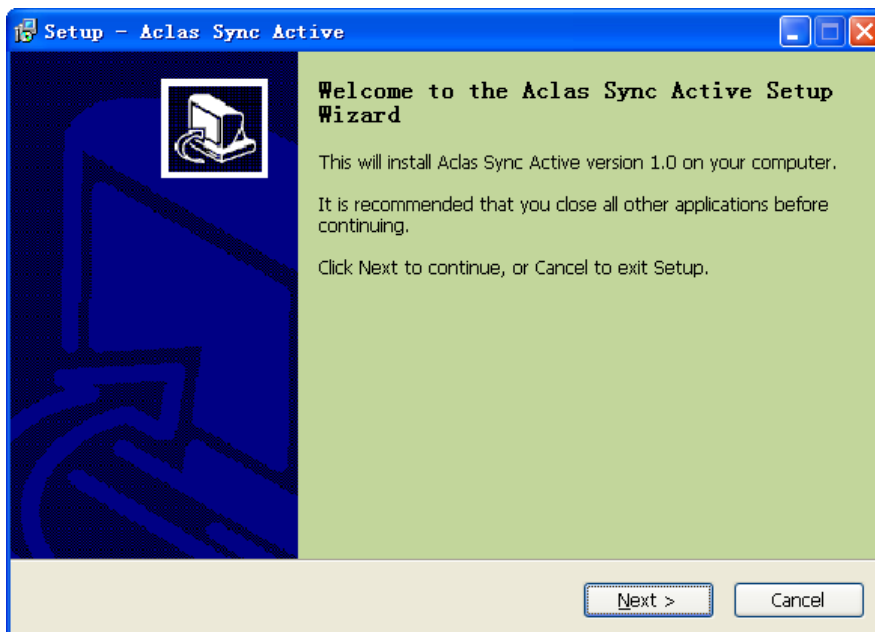
# 1 Program Installation



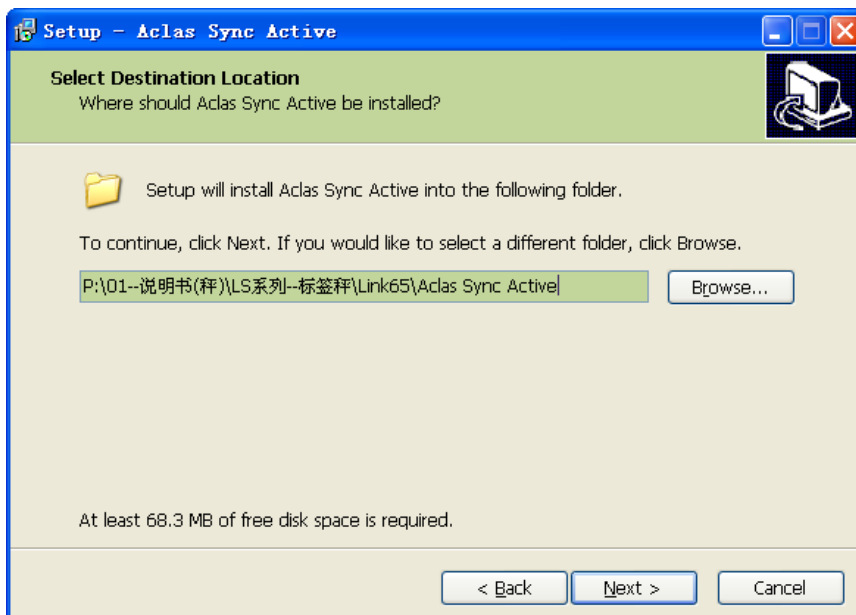
Double click the program installation package and choose language as English, and click “OK” as shown in the following picture:



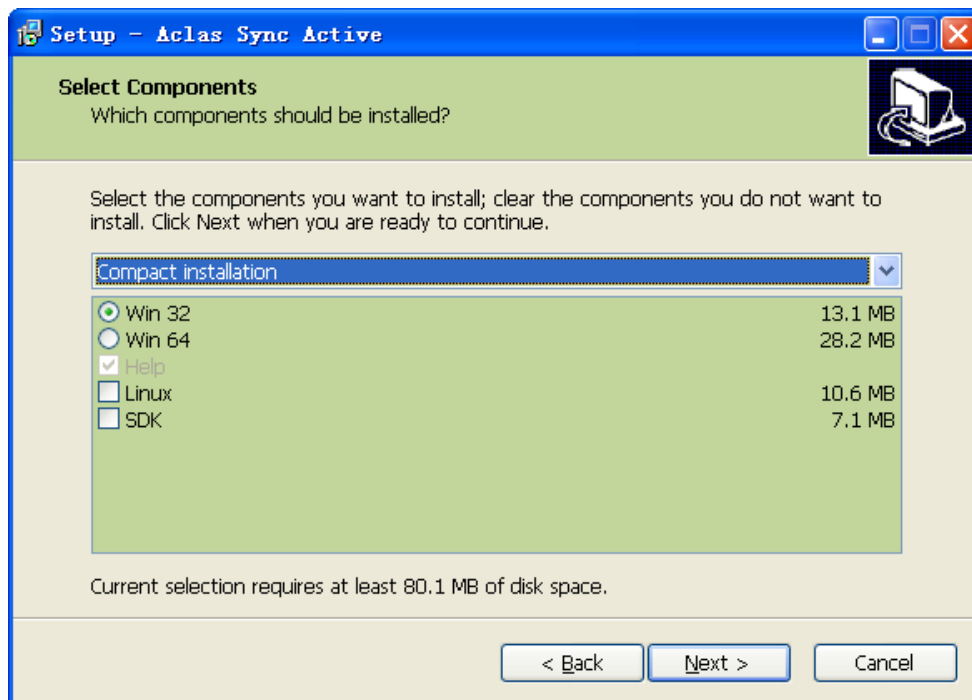
Click “Next” according to the prompt, as shown in the following:



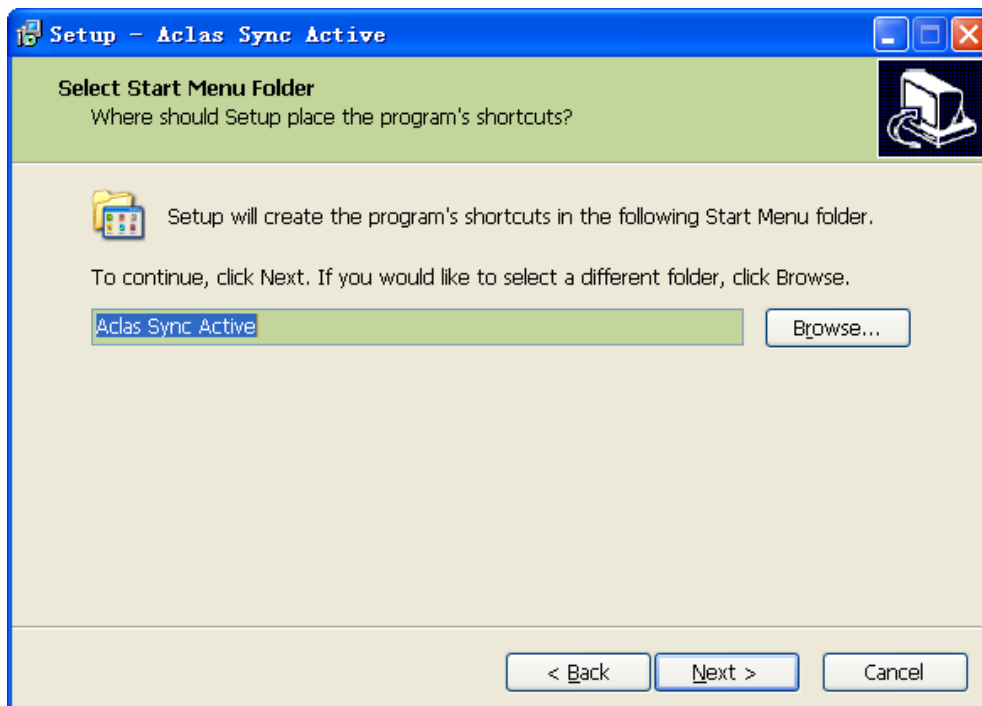
Click “Browse” to choose the location on which the program is installed, and the click “Next” according to the prompt, as shown in the following:



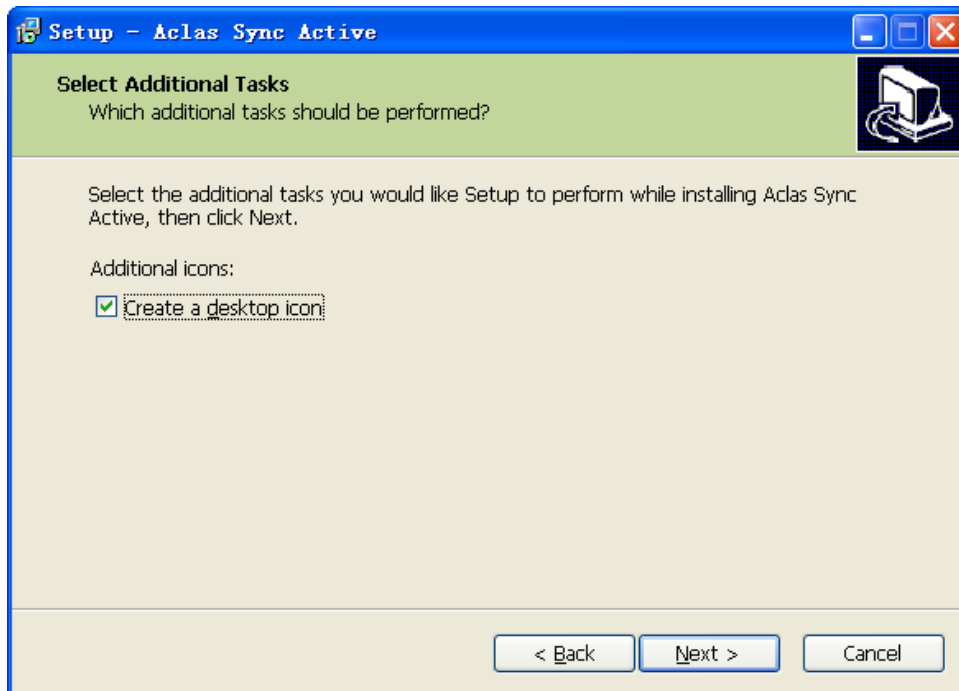
Choose the computer bit (you can view the computer bit by right click “My Computer” on the desk, and click “Properties”, you can see the bit in “Common” Interface, “System” section.), and then choose Linux system or SDK DELL, then click “Next” according to the prompt, as shown in the following:



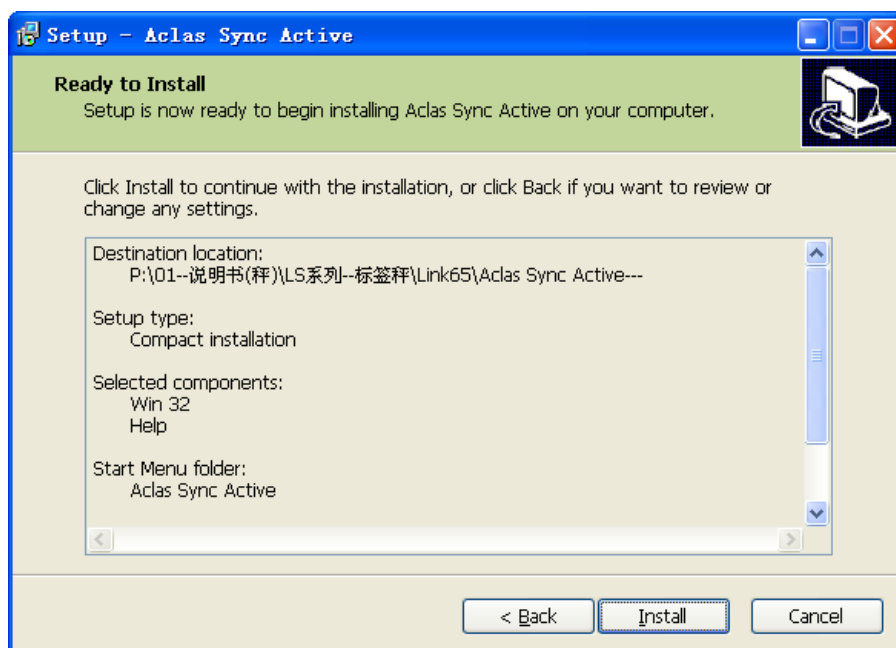
Click “Browse” to set the folder in which the program installed then click “Next” according to the prompt, as shown in the following:



Click “next” according to the prompt, as shown in the following:



Click “Install” according to the prompt, as shown in the following, and then click “Finish” to finish the program installation.



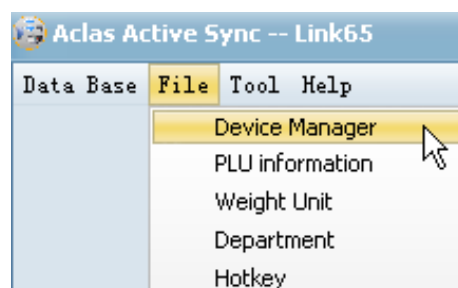
## 2 Link Scale to PC


1. Connect scale to PC: via Ethernet Port.
2. Open the program of Link65.

Open the Program in the disk attached, double click “AclasActiveSync\_PC”, and input the default user name “admin” (Letters are not case-sensitive) and default password “123”, then click “Enter” to enter the program.

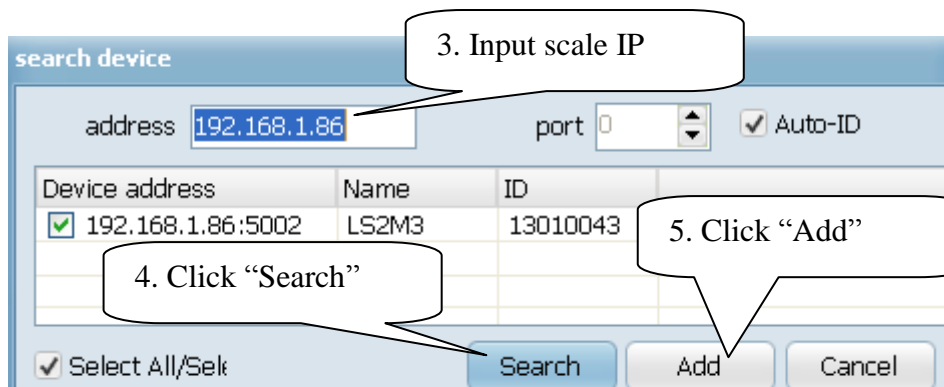
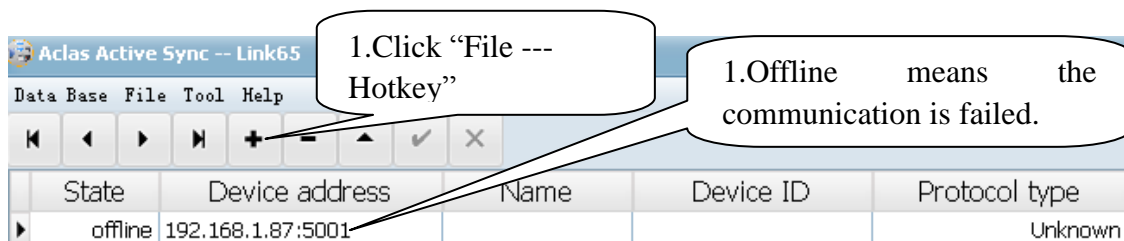
3. Communication test.

Click “File”---“Device Manager” on the interface of the program.



If the state shows “Offline”, it means the scale doesn’t connect with PC, communication between the scale and PC is fail. Please replug the Ethernet cable again. If the IP address of the scale shows in the state column is wrong, please click the “Add” icon  on the tool bar.

**Note:** in order to realize communication between PC and scale, they must be in the same network segment, assume their IP is in 1segment, when inputting scale IP, input “192.168.1.255” and then click “Search” the system will search all the device addresses connecting with the PC at the same time.



The screenshot shows the Aclas Active Sync software interface. At the top, a menu bar includes 'Data Base File Tool Help'. Below it is a toolbar with navigation icons. A table displays device information with columns: State, Device address, Name, Device ID, Protocol type, DepartmentID, KeyBoardID, and HotKeyGroupID. Two rows are visible: one 'offline' and one 'online'. A callout points to the 'Device address' column, stating: 'Right click the column, you can add, edit, delete, select all or clear all the device address.'

Below the table, the 'Device information' section contains fields for State (online), Address (192.168.1.86:5002), Device ID (LS2M3), Name (13010043), HotKeyType (Default), and Hotkey group. The 'Device option' section contains a table of parameters and values:

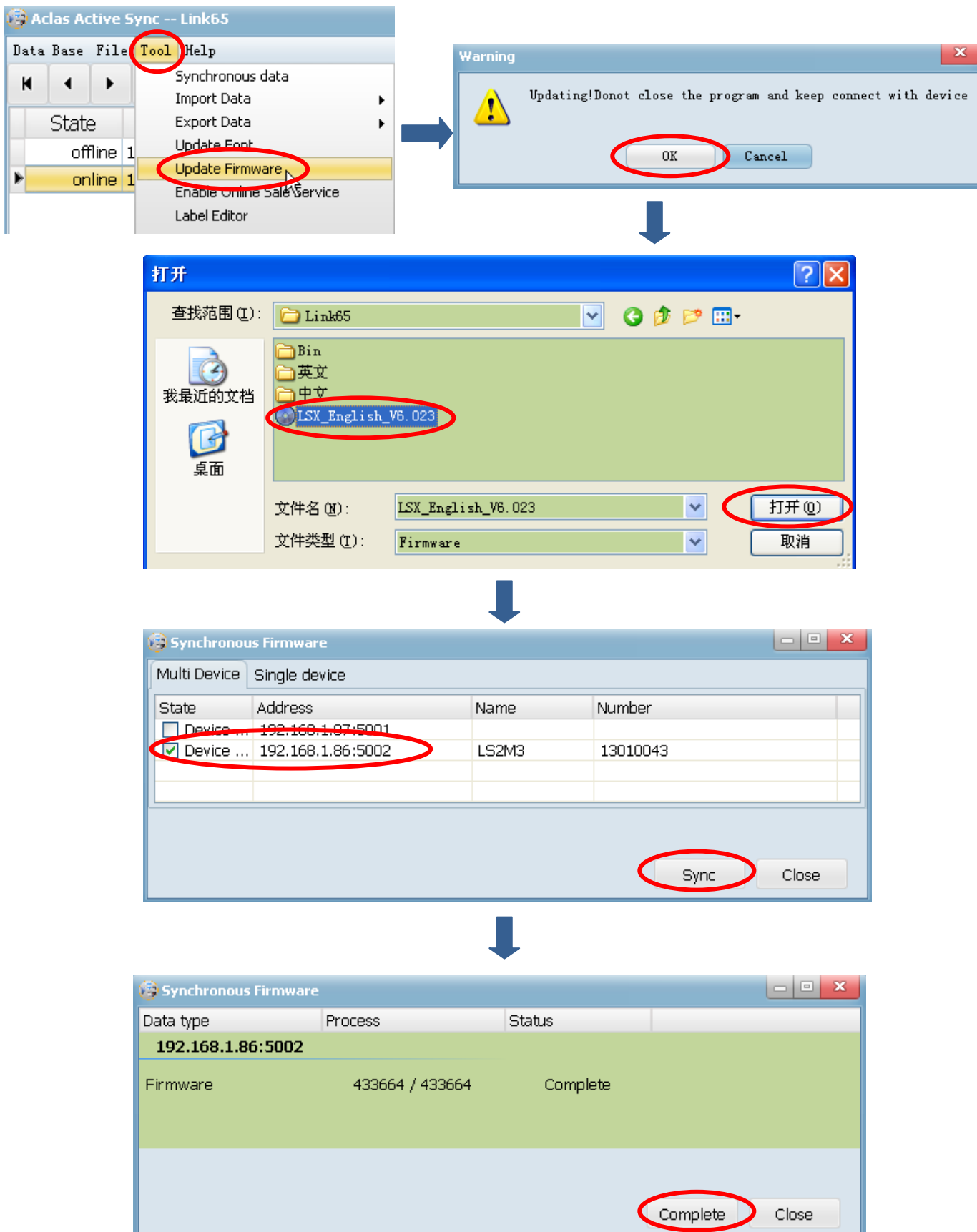
Parameter	Value
Print label background or not	No print
Only allow sale with hotkey or not	no
Align label	0
Print default label	A1
Paper type	Label,no recycle
Receipt date format	DDMMYY
Print unit in unit price or not	Not print
Print unit	Not print
Use unit1	g
Use unit2	500g
Decimal point	2
Lock system option	Unlock
Lock account function	Unlock
Lock discount function	Unlock

At the bottom right of the 'Device option' section are two buttons: 'Read option' and 'Write option'. Callouts provide instructions: '6. The IP address shows online means the communication is ok, you can begin to download and upload data between scale and PC.'; '7. Click "Read option" to check the parameter of the device.'; and '8. Click "Write option" to save the parameter.'



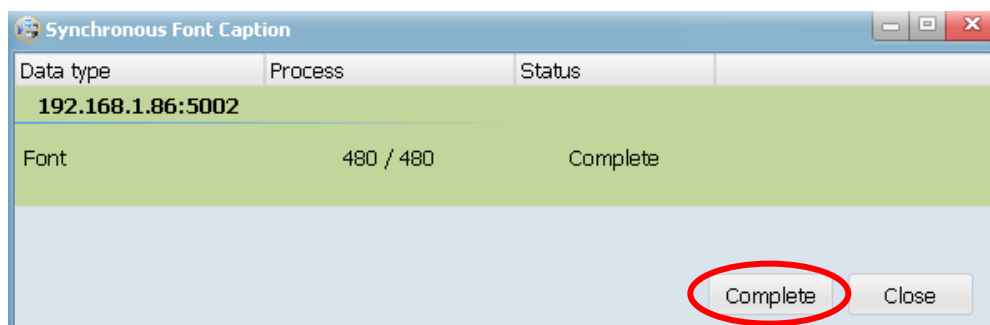
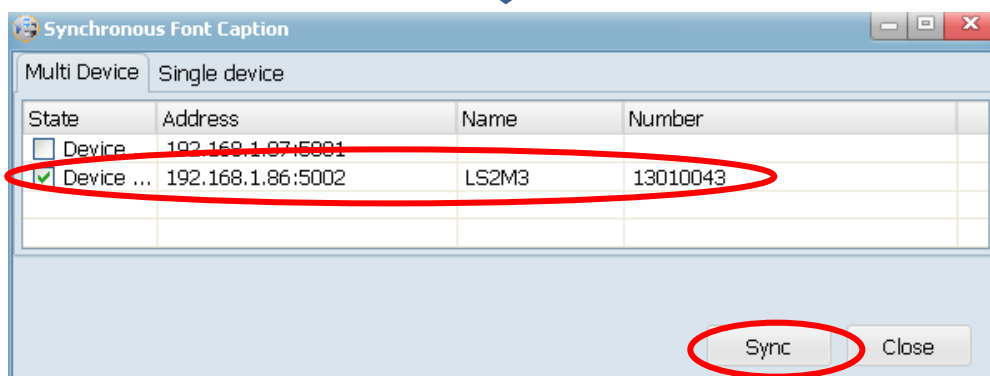
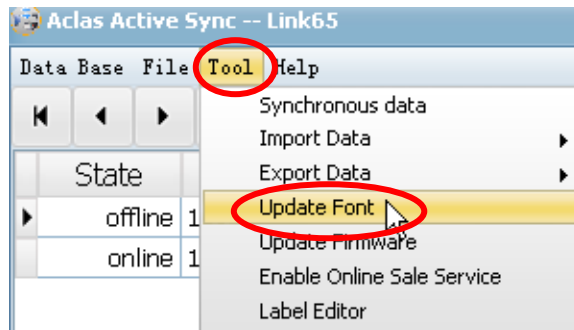
### 3 Update Firmware

Make sure that the scale is connected with PC successfully and open the Link65 program. Click “Tool---Update Firmware”, click “OK” according the prompt. Then choose the firmware you need to update, click “Execute” to update. Check the scale IP and click “Sync” to synchronize firmware data.

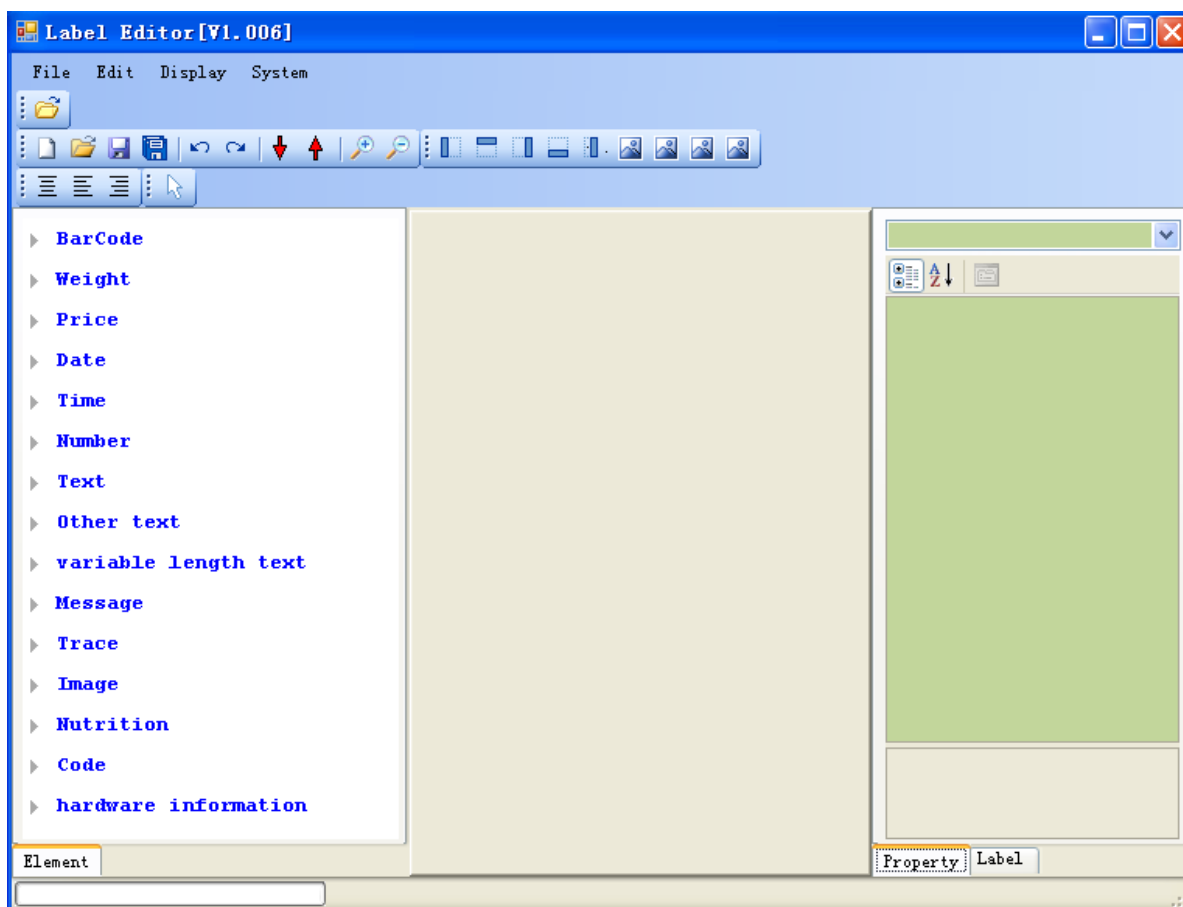
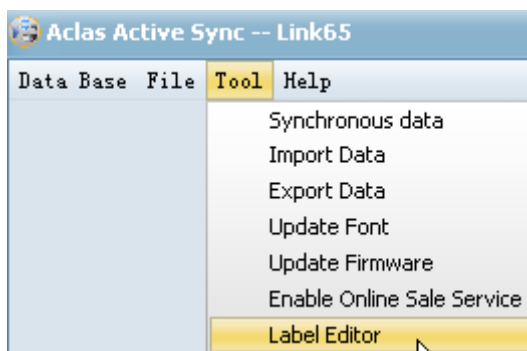


## 4 Update Font

Make sure that the scale is connected with PC successfully and open the Link65 program. Click “Tool---Update Font”, check the scale IP address and click “Sync” according the prompt to synchronize font. Click “Complete” after finishing updating font.

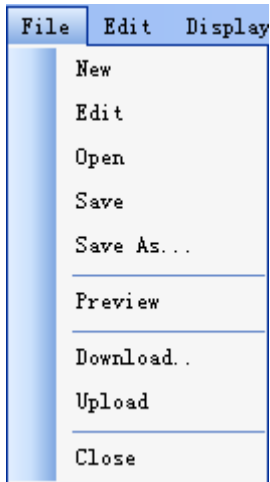



# 5 Label Editor




## 5.1. Menu Column Introduction



### ◆ File menu




New: create a new label. The same as the short cut icon 


Edit: Edit the label type and size

Open: Open a label that you have edited and saved. The same as the short cut icon 

Save and Save as: save the label or save the label as other name or to other route. The same as the short icon  and 

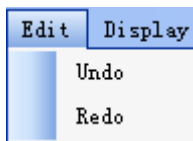
Preview: Preview the label to check the effect.


Download: Download the label to the scale. This function is the same as the short cut icon 


Upload: Upload the label from scale to PC. This function is the same as the short cut icon 

Close: Exit the label.

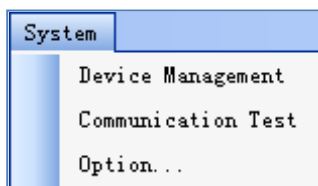
### ◆ Edit menu



Undo: Return last step operation. This function is the same as the short cut icon in tool boor 

Redo: This function is the same as the short cut icon in tool bar 

### ◆ System menu



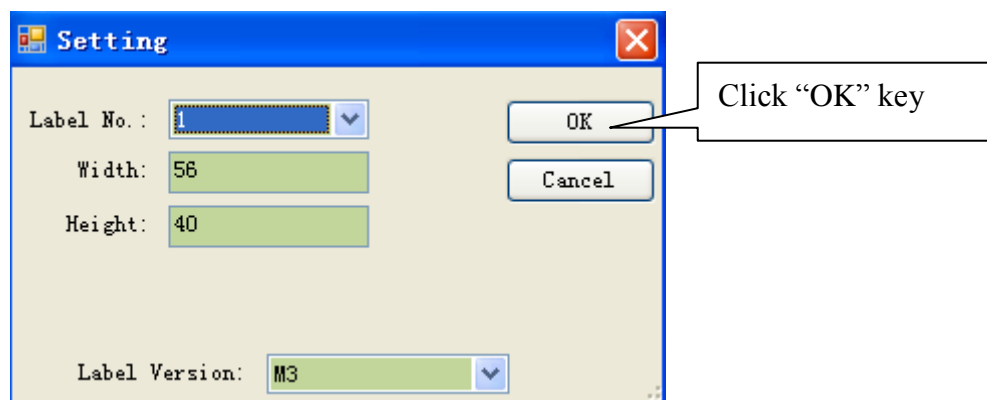
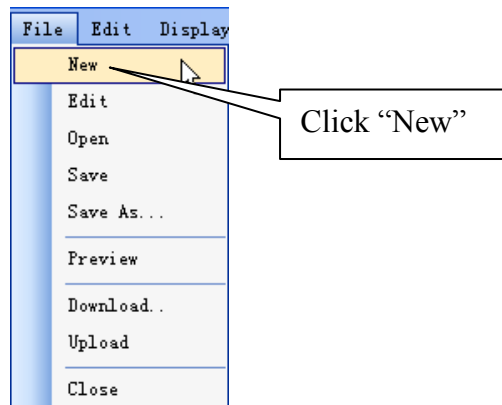
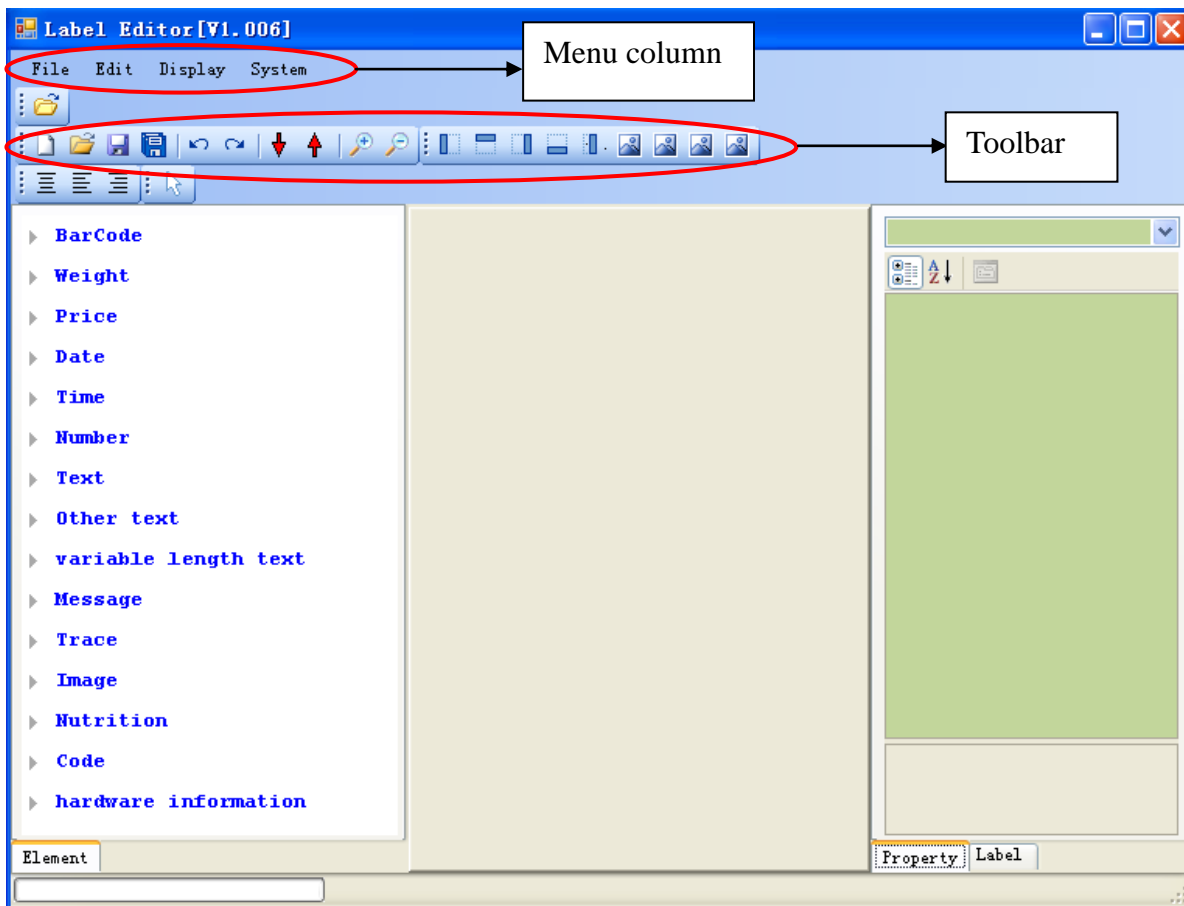
Device Management: Manage machine

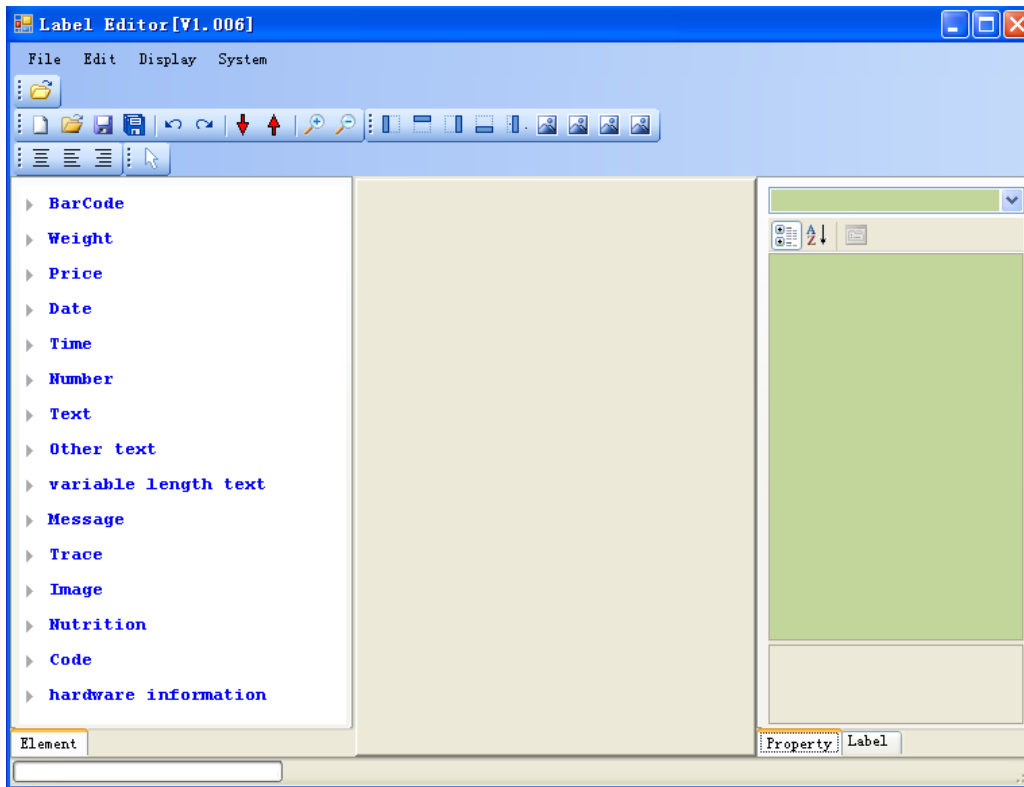
Communication test: Communication test

Option: choose language pattern

## 5.2. How to Make Label

Double click label “Application1.exe”, and then you will see below interface:





**Basic label editing steps:**

- 1) Click the item that you needed in label items area.
- 2) Click the mouse; hold it and drag a box on the label, and then you can see the item will be displayed on the label.
- 3) Make the item in selected state.
- 4) Use your mouse to get close to the border, when the mouse became the icon like below image A, B or C, means you can adjust the width or length. If the mouse became the icon like image C, means you can adjust the whole border. If the mouse became the icon like image D, means you can move the item to any position.

For example:

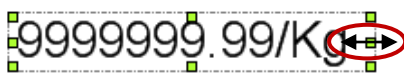


Image A

Use your mouse get close to the boarder till the mouse became the icon, and then click the mouse, hold it and drag the mouse till you get satisfied of the width.



Image B

Use your mouse get close to the boarder till the mouse became the icon, and then click the mouse, hold it and drag the mouse till you get satisfied of the length.

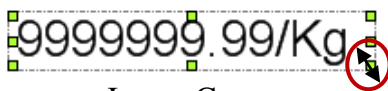


Image C

Use your mouse get close to the boarder till the mouse became the icon, and then click the mouse, hold it and drag the mouse till you get satisfied.



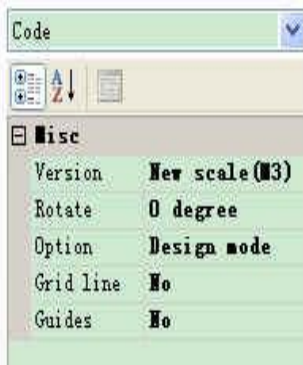
Image D

Use your mouse get close to the boarder till the mouse became the icon, and then click the mouse, hold it and drag the mouse to move the item.

## 5.3. How to modify label

### 4.3.1. Modify a whole label

Click any blank position on the label, and then you can modify the whole label via the right column.

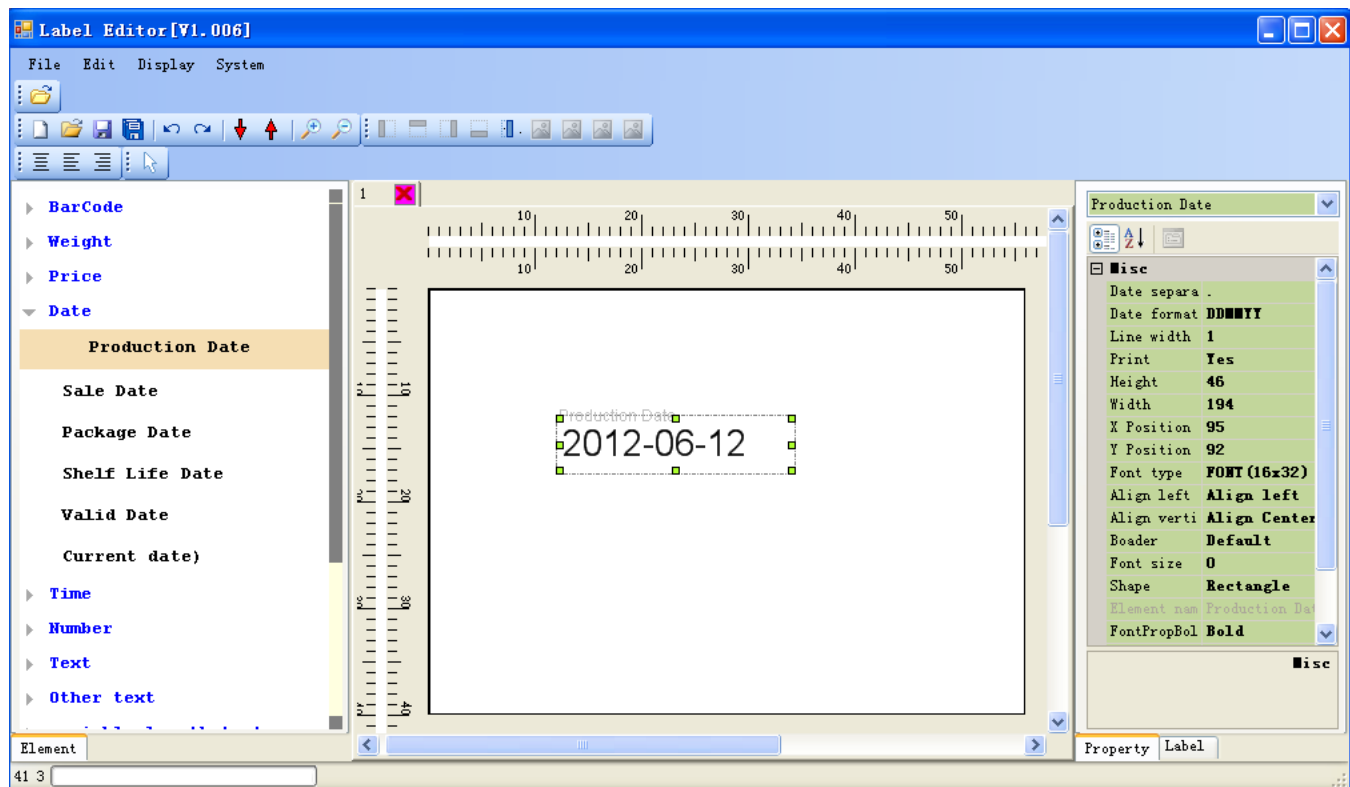


- ◆ Version: Click it to choose scale M3 version or old version.
- ◆ Rotate: To choose you rotate degree of your label
- ◆ Option: to choose option mode
- ◆ Grid Line: Click it to choose whether have grid line or not.
- ◆ Guides: Click it to choose whether have guides or not.

### 4.3.2. Modify a Single Item

If you want to modify the related item on the label, you should click it firstly to make it in selected status, and then you can modify it by the below area.

For example, when you need to modify you production date label,

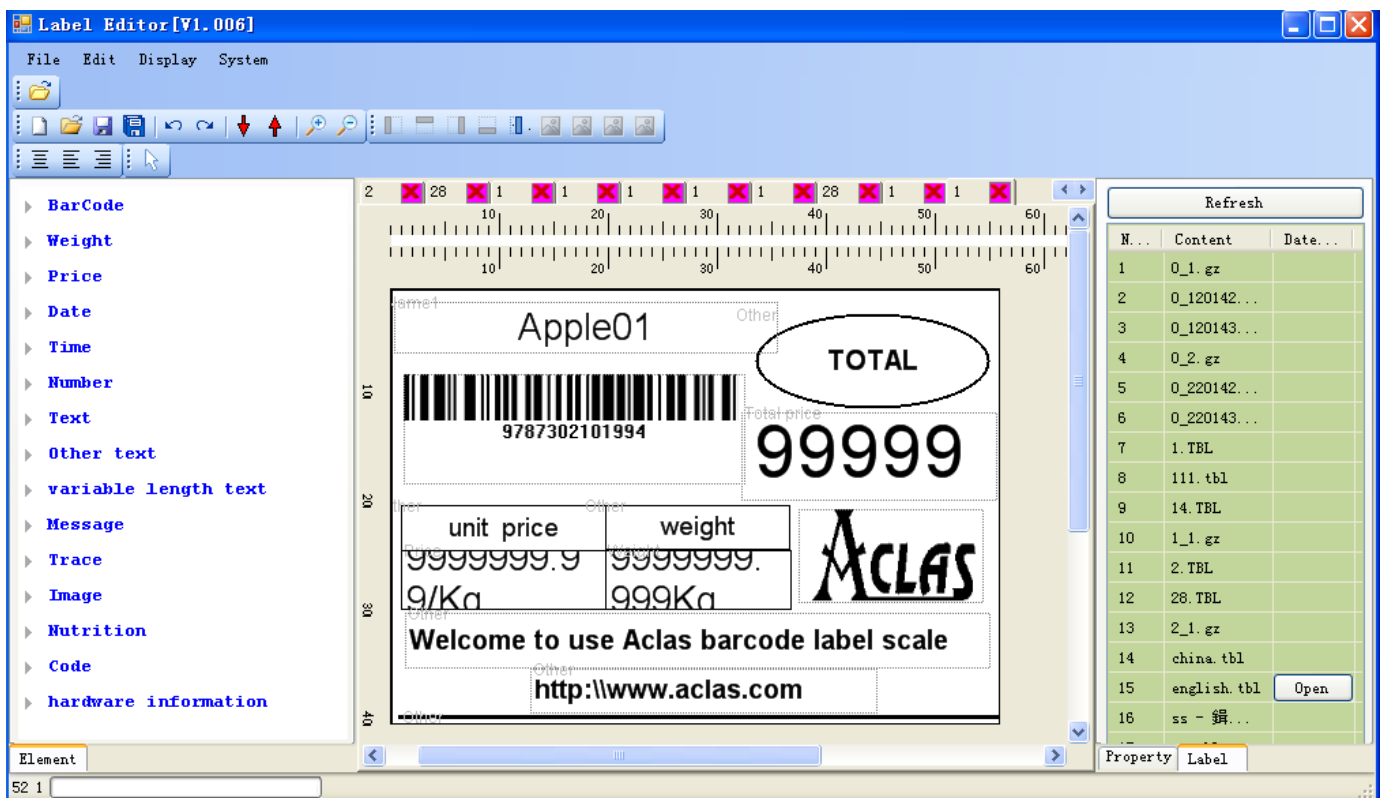





- ◆ Date separate : click it to choose the date separate symbol
- ◆ Date format: to choose date format
- ◆ Print: True means this item will be printed out. False means this item will be not printed out.
- ◆ Height and Width: input the number directly to adjust the border size.
- ◆ X and Y: the coordinate of the item. You can input the number directly to move the item.
- ◆ Font type :to choose font type
- ◆ Align left and align vertical: to adjust label align direction
- ◆ Boarder: to choose boarder
- ◆ Font size: to choose font size
- ◆ Shape: click it to choose the shape of label
- ◆ Rotate: to adjust rotate degree

Eg:

If you want to make labels like below picture



**Note:**

- 1) when you making custom label, please refer to the default label template, so as to avoid shortening the lifetime of printer head.
- 2) If there are label templates on PC, you can click the icon  on the toolbar to upload the label to the software, and then click the “Display” on the function manual to choose label template.





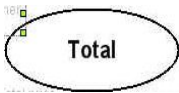
PLU name of "Text"

- 1 Press "Text"---PLU Name
- 2 Click the mouse; hold it and drag a box on the label, and then you can see this item will be displayed on the label.
- 3 click the box and edit information on right side box, for example "font type, align .and so on "



Barcode of section "barcode"

- 1 Press "barcode"---barcode
- 2 Click the mouse; hold it and drag a box on the label, and then you can see this item will be displayed on the label.
- 3 click the box and edit information on right side box, for example "barcode type, width, height and so on "



Total price of section "Price"

- 1 Press 'other '
- 2 Click the mouse; hold it and drag a box on the label, and then you can see this item will be displayed on the label.
- 3 click the box and edit information on right side box, for example "name, shape, width, height and so on ".



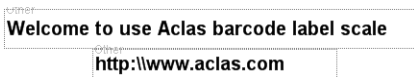
Price section

- 1 Press "Price" --Price
- 2 Click the mouse; hold it and drag a box on the label, and then you can see this item will be displayed on the label.
- 3 click the box and edit information on right side box, for example "font, width, height and so on ".



Image

- 1 Press "image"--image
- 2 choose the picture you want to insert when a message box pops out.
- 3 click the box and edit information on right side box, for example "width, height and so on ".



Other Text

- 1 Press "Other text"--other
- 2 Click the mouse; hold it and drag a box on the label, and then you can see this item will be displayed on the label.
- 3 click the box and edit information on right side box, for example "name, shape, width, height and so on ".

## 5.4. Alignment Function



Left justify: Select two or more than two items, then use mouse to click this icon, the items you selected will be left justifying.



Top justify: Select two or more than two items, then use mouse to click this icon , the items you selected will be top justifying.



Right justify: Select two or more than two items, then use mouse to click this icon , the items you selected will be right justifying.



Bottom justify: Select two or more than two items, then use mouse to click this icon , the items you selected will be bottom justifying.

## 5.5. Spacing setting



Same spacing in horizontal: Select items and click this button, the space between these items is the same.



Same spacing in vertical: Select items and click this button, the space between these items is the same.



Same height: Select items and click this button, the height of all the items is the same with the first one selected.



Same width: Select items and click this button, the width of all the items is the same with the first one selected.

## 5.6. Zoom in & Zoom out



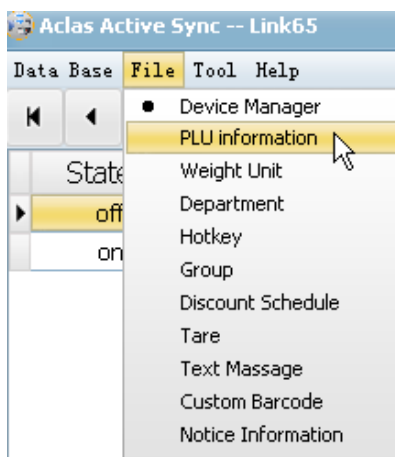
Zoom in: Click the item that you need to zoom in and make it in selected state, click this zoom in icon.





Zoom out: Click the item that you need to zoom out and make it in selected state, click this zoom out icon.

# 6 PLU Information

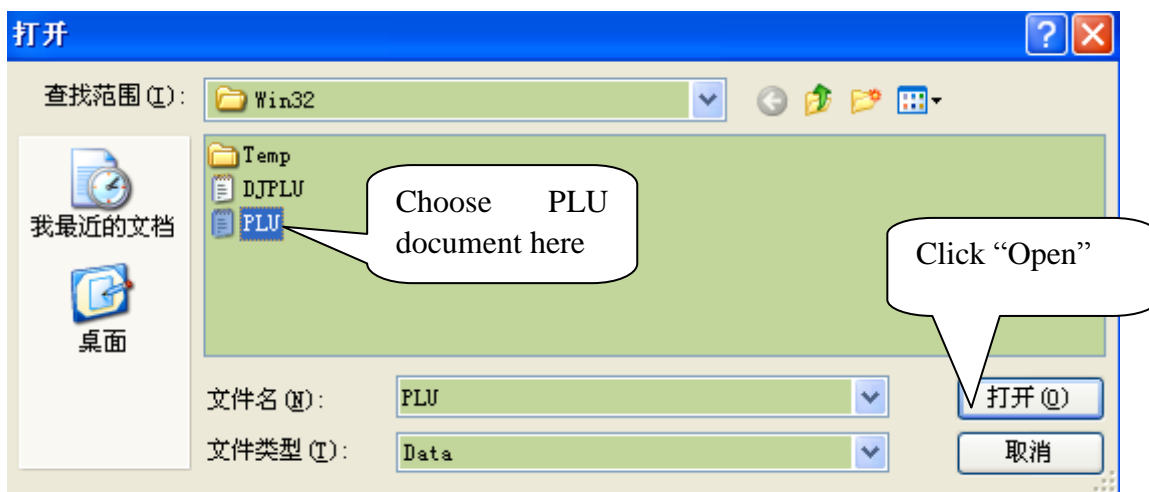
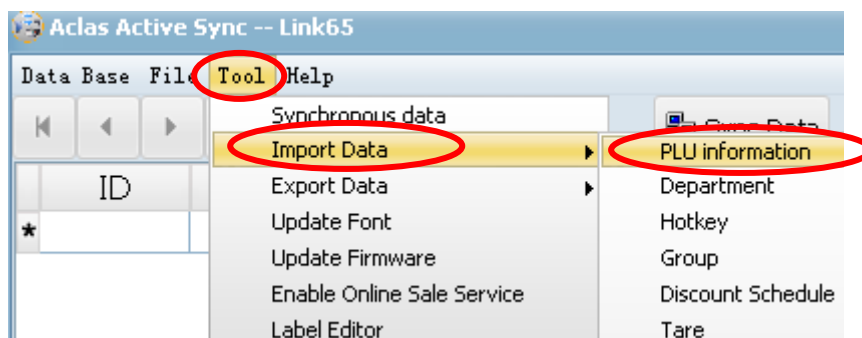
Double click the program to enter the main interface. Click “File”---“PLU Information” to enter into the PLU interface. You can edit PLU information here.

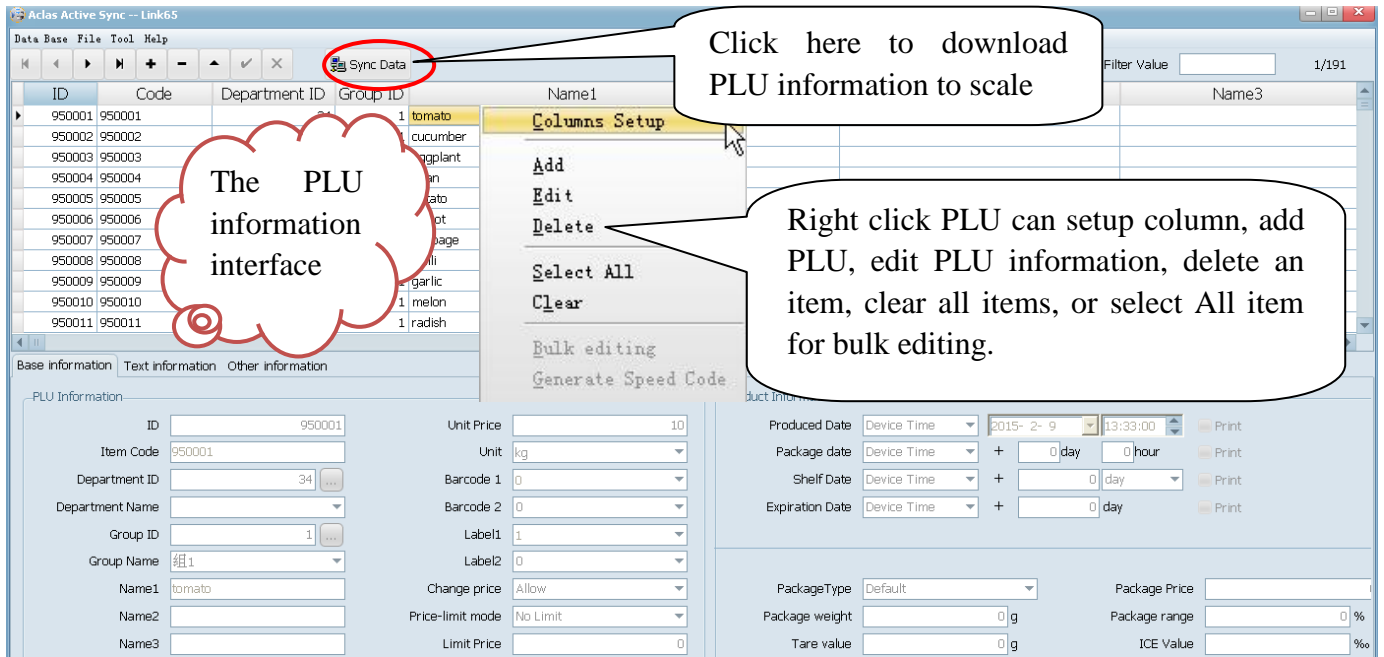


## 6.1. PLU Edition

You can click icon “Add”  on the toolbar to edit PLU information, and click “Save” icon  to save the operation;

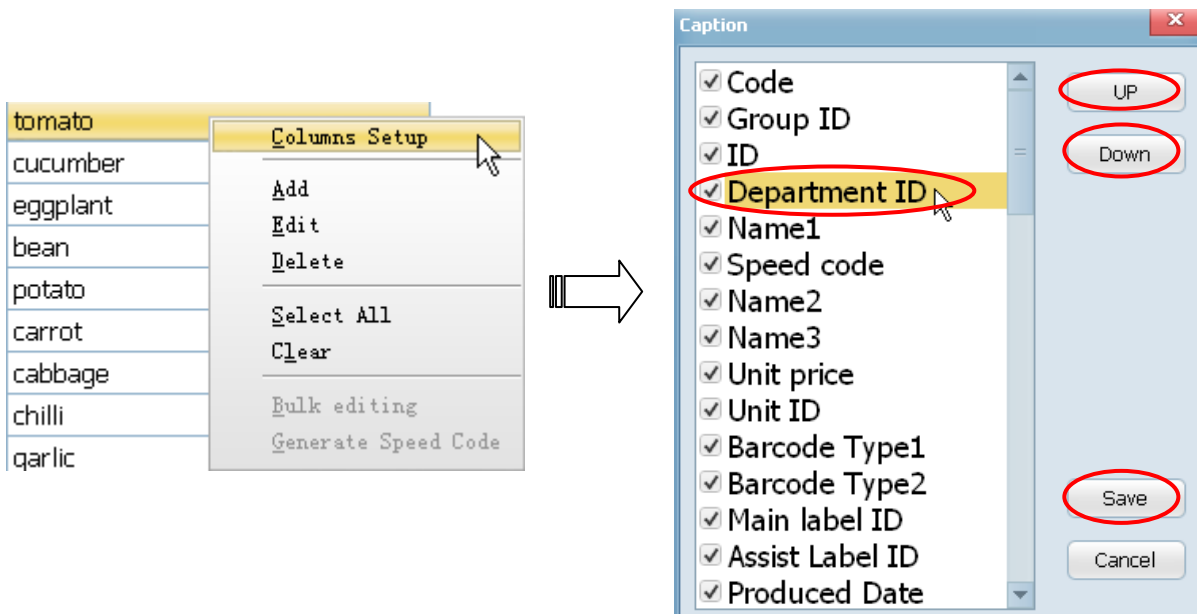
If there are PLU information that has been already edited on PC, you can import it to Link65 program and export to scale. Click “Tool”---“Import Data”---“PLU information”, and then choose the PLU document on the pop window, then click “Open” to execute. After importing PLU, click “Complete” to close the state window.





### Column Setup

Right click the PLU and click “Column Setup”, and then choose a caption on the pop-up window, and click “UP” or “Down” to adjust the caption location. “Up” means to adjust the caption to a prior location, and “Down” means to a next location. Click “Save” after setting.

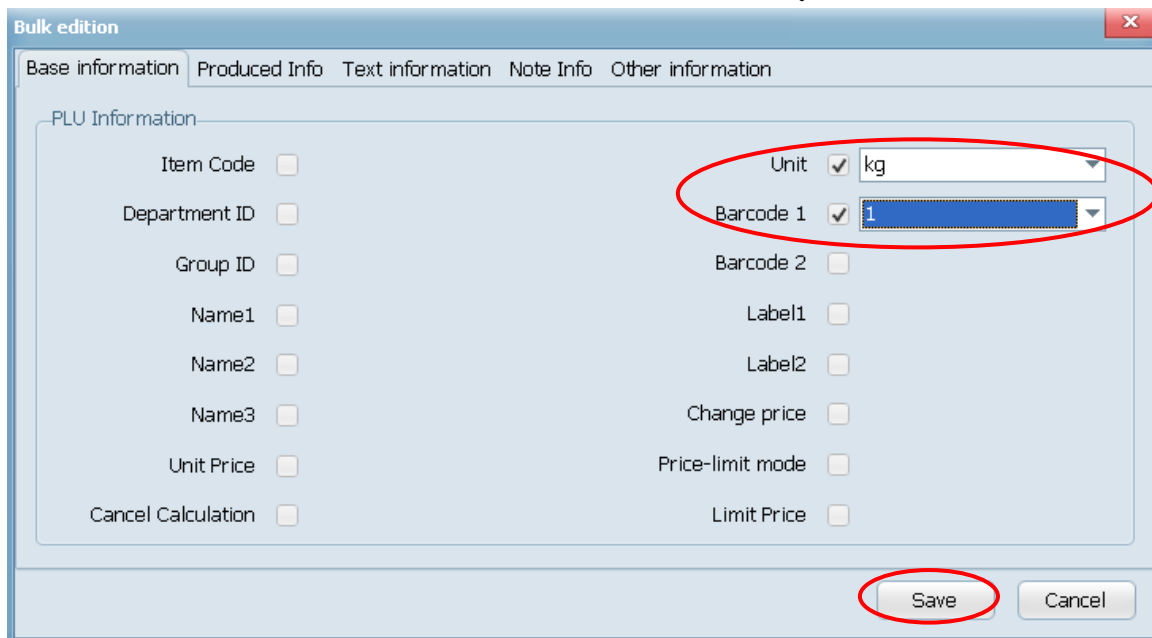
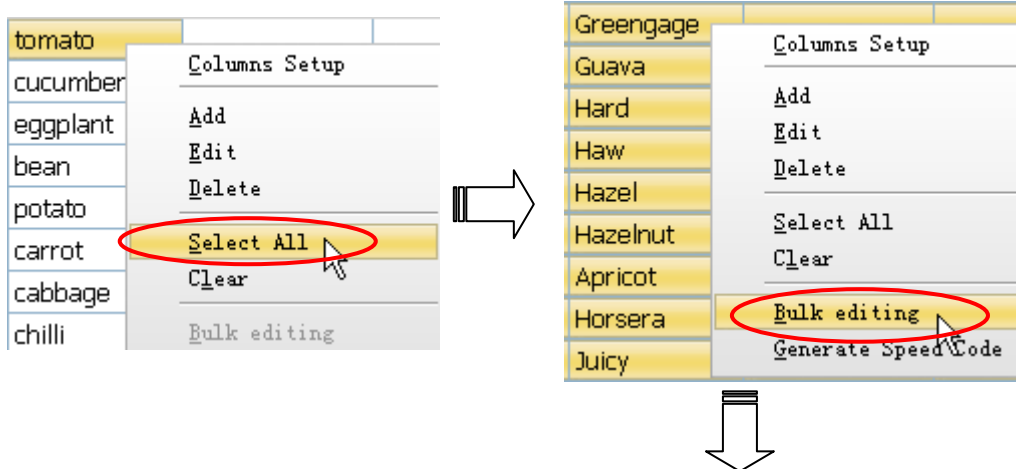


“Up” and “Down” means to adjust the caption location

ID	Code	Department ID	Group ID	Name1	Speed code	Name2	Name3	Unit price
50001	050001	34	1	tomato				10
50002	050002	2	1	cucumber				11
50003	050003	85	1	eggplant				12
50004	050004	34	1	bean				13

## Bulk Edition

Right click PLU and click “Select ALL”, and then right click selected PLU and click “Bulk editing” on the pop-up window. Tick behind each item and edit. Click “Save” after setting.



The 'Bulk edition' dialog box is shown with the 'Base information' tab selected. The 'PLU Information' section contains the following fields:

Item Code	<input type="checkbox"/>	Unit	<input checked="" type="checkbox"/> kg
Department ID	<input type="checkbox"/>	Barcode 1	<input checked="" type="checkbox"/> 1
Group ID	<input type="checkbox"/>	Barcode 2	<input type="checkbox"/>
Name1	<input type="checkbox"/>	Label1	<input type="checkbox"/>
Name2	<input type="checkbox"/>	Label2	<input type="checkbox"/>
Name3	<input type="checkbox"/>	Change price	<input type="checkbox"/>
Unit Price	<input type="checkbox"/>	Price-limit mode	<input type="checkbox"/>
Cancel Calculation	<input type="checkbox"/>	Limit Price	<input type="checkbox"/>

The 'Unit' dropdown menu is set to 'kg' and the 'Barcode 1' dropdown menu is set to '1'. Both dropdown menus are circled in red. At the bottom right, the 'Save' button is circled in red.

Choose an item and double click to edit (or choose an item and click “Edit” icon ▲ for edition).

**PLU information edition area**

**Date edit area of PLU information**

**Click triangle mark to choose label number, if you set label2 as 0, the scale will not print auxiliary label.**

**Package, tare and ice edit area.**

**Text Message choosing area**


**Note:**  
 1) Text Message edition please refer to chapter 6.6 Text Message Edition;  
 2) You can edit notes here and print them, which enlarge the capacity of print.

Click here to choose discount table or Discount rate.

If you choose discount table click here to choose discount table.

If you choose discount rate click here to input discount rate.

**Note:** the edition of discount can be seen in chapter 6.4 Discount schedule Edition.

After settings of PLU information, click  on the toolbar to download PLU information to the scale.

**Note: Tool bar introduction**



A: the first record;

B: prior record;

C: next record;

D: last record;

E: insert record;

F: delete record;

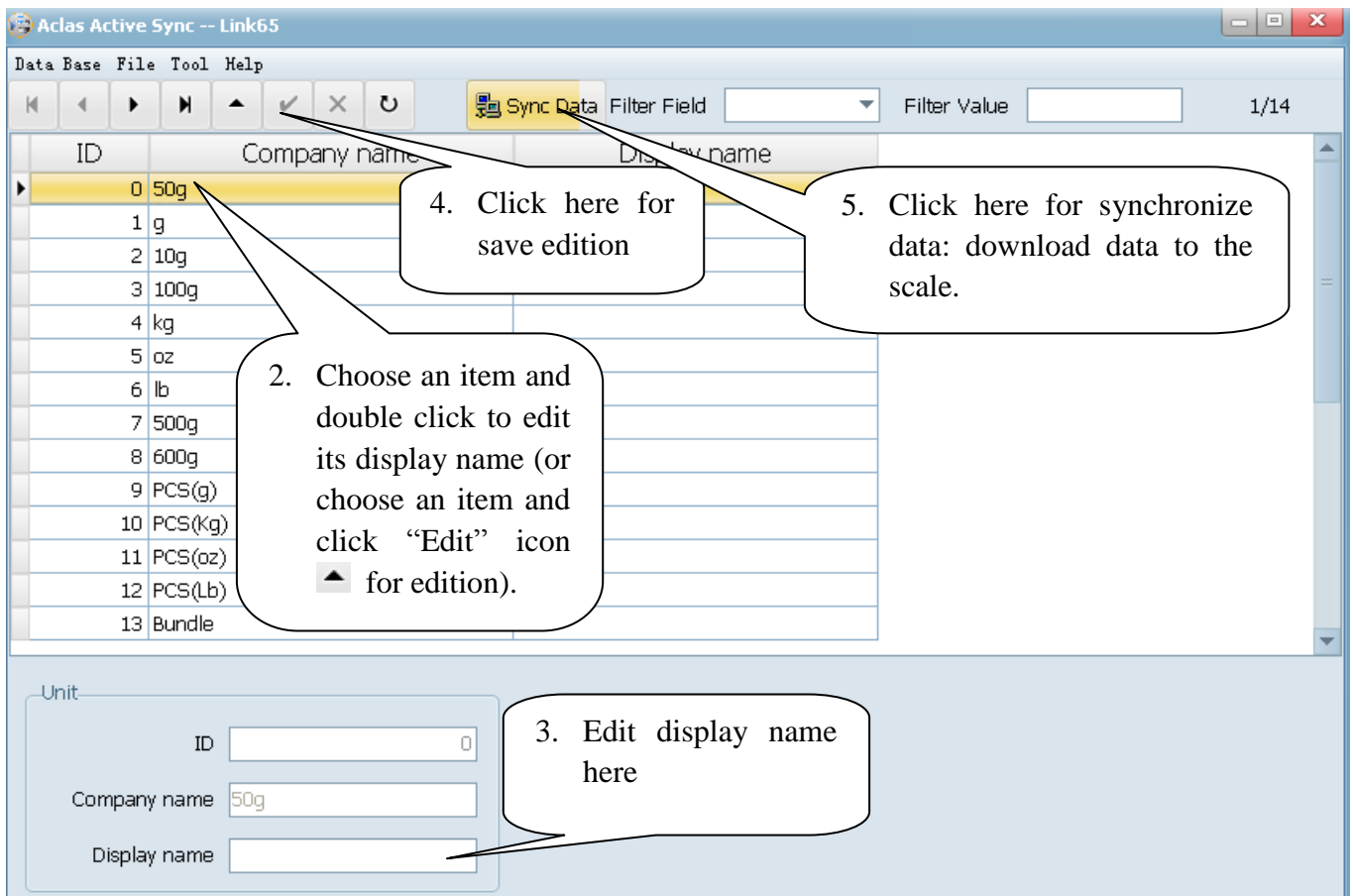
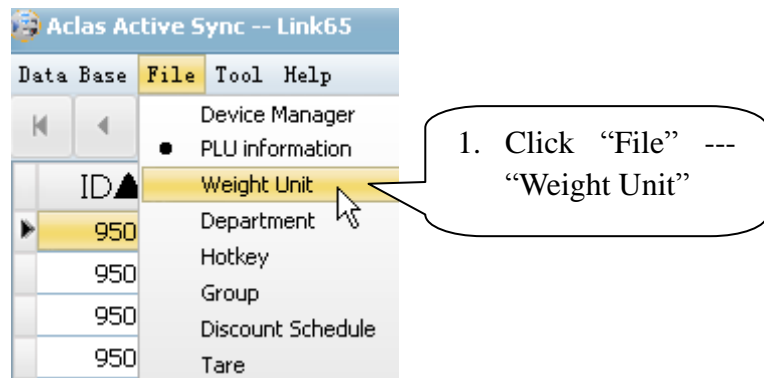
G: edit record;

H: save edition;

I: cancel edition;

J: synchronize data: download data from program to scale.

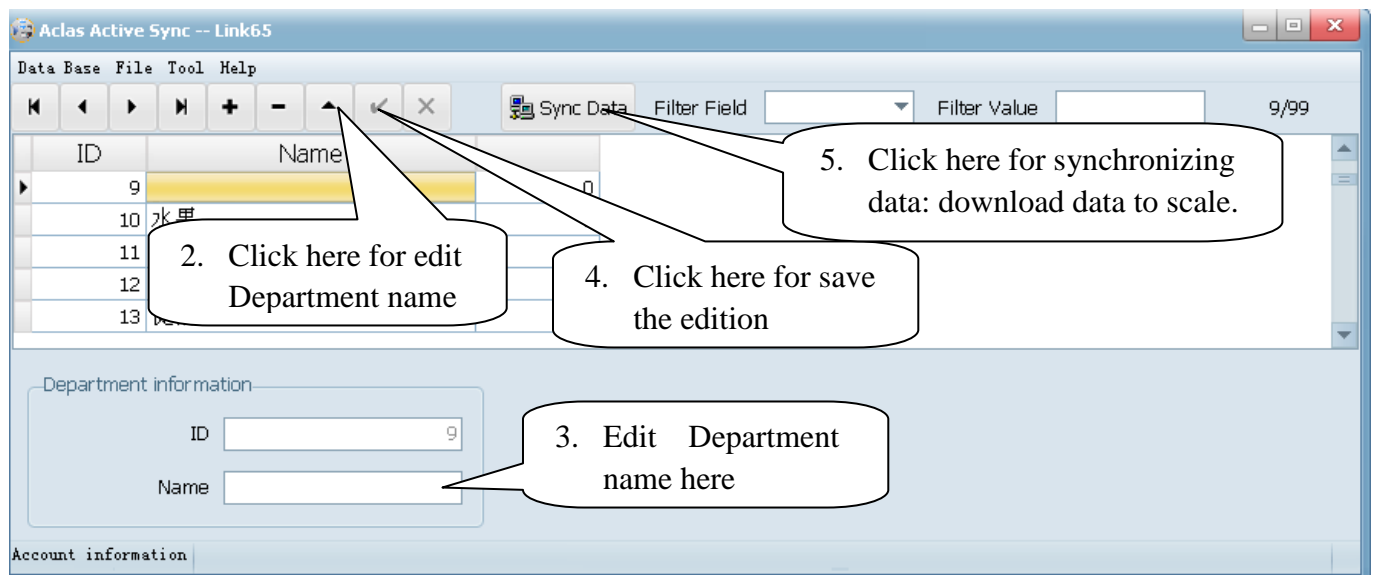
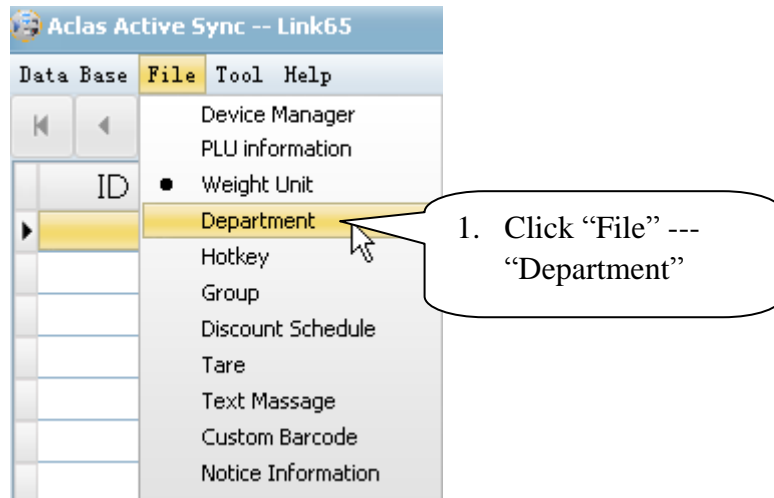
## 6.2. Weight Unit Edition





## 6.3. Department/Group Edition

### Department Edition

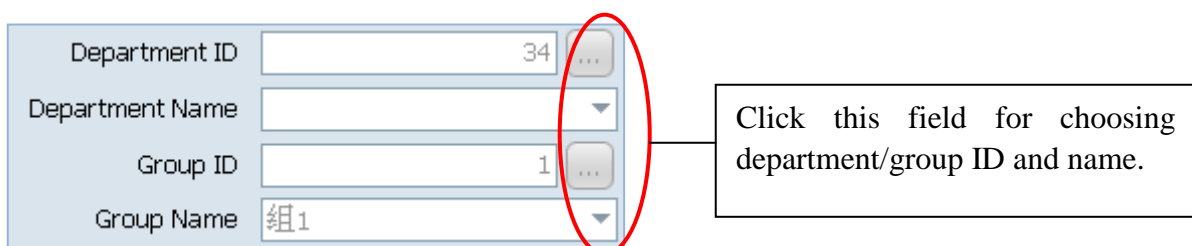


### Group Edition

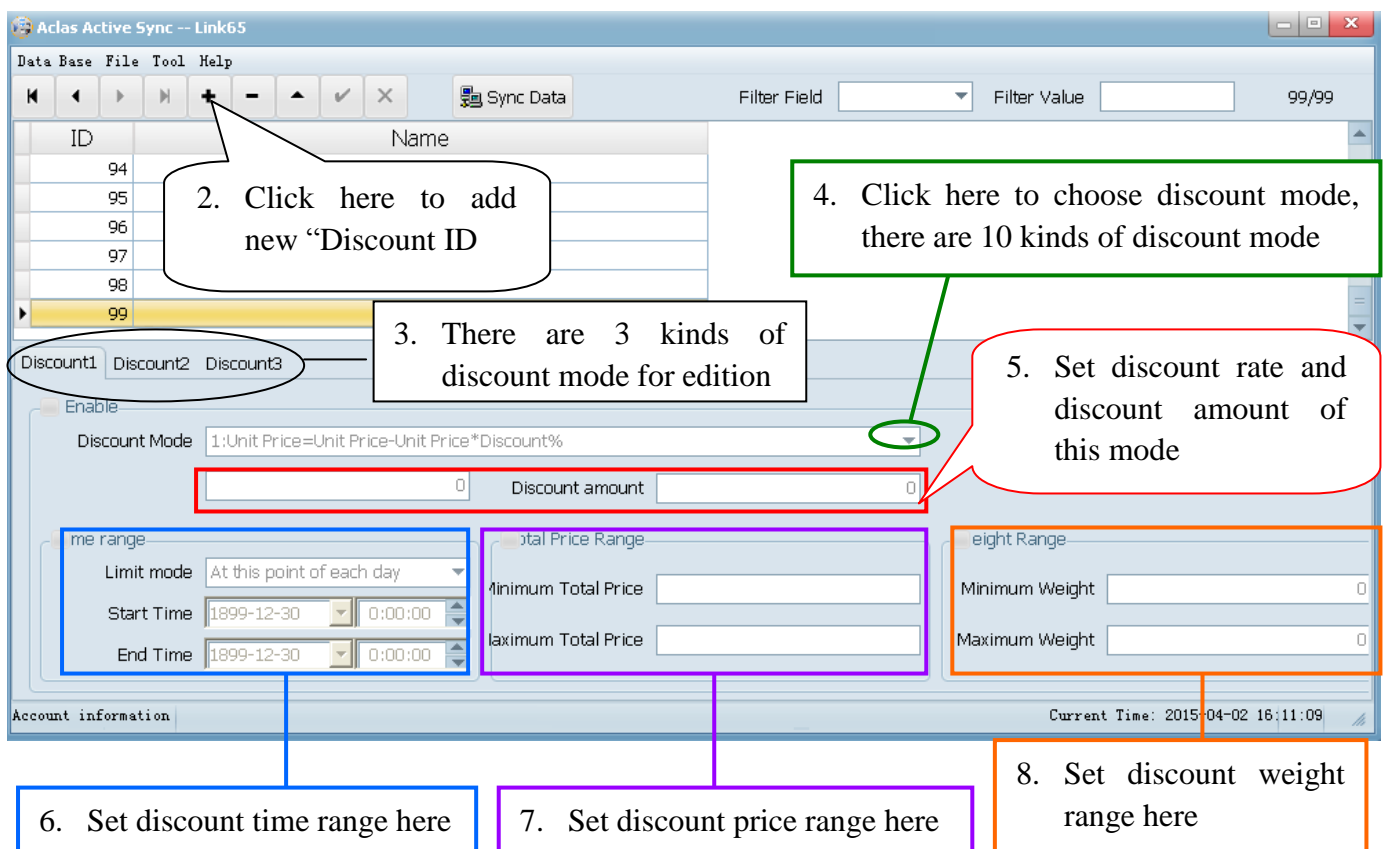
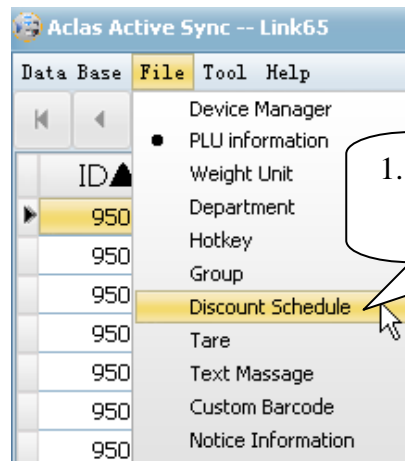
The method to edit group is the same as editing department, so the method is not repeated here.

Note:

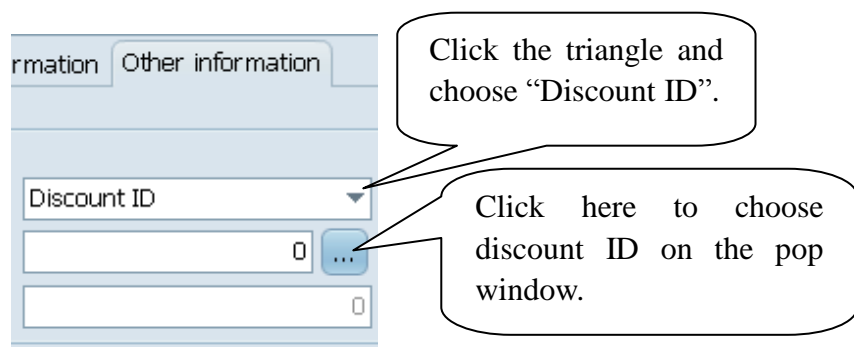
1. The ID of department and group is the same (1~99).
2. After edition of department and group, they can be chosen in chapter 6.1 "PLU edition" --- "Basic information"---"PLU information".



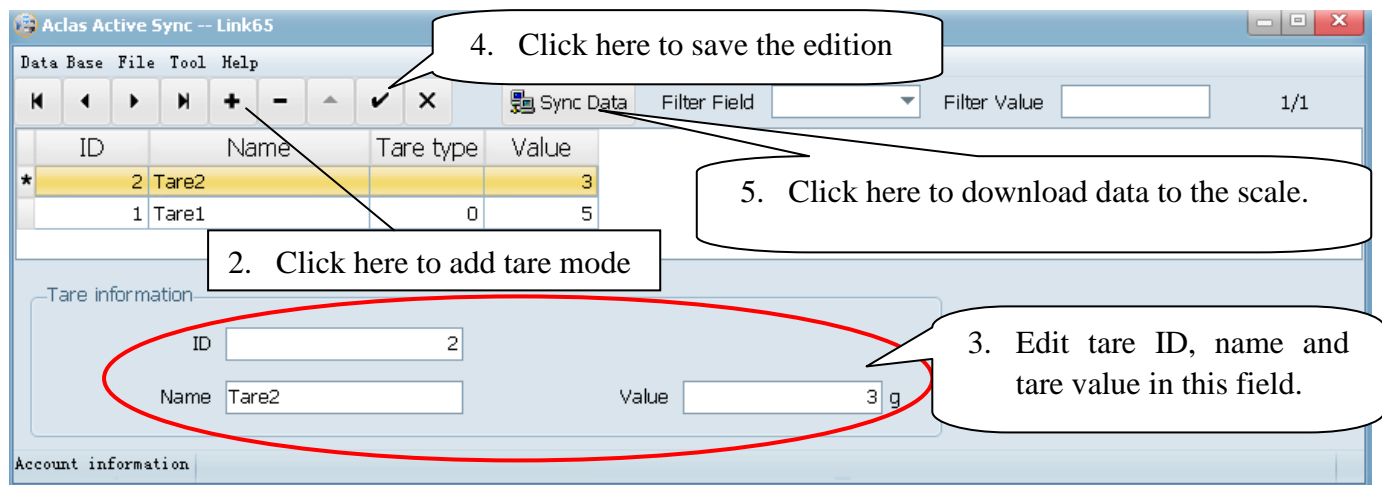
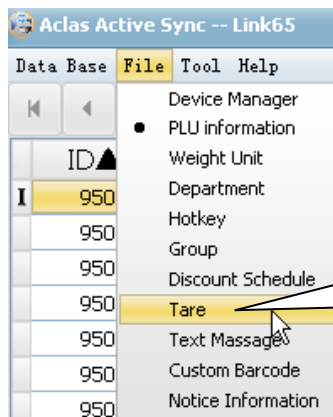
## 6.4. Discount Schedule Edition



Note: After edition of discount schedule, they can be chosen in chapter 6.1 “PLU edition” --- “other information”.

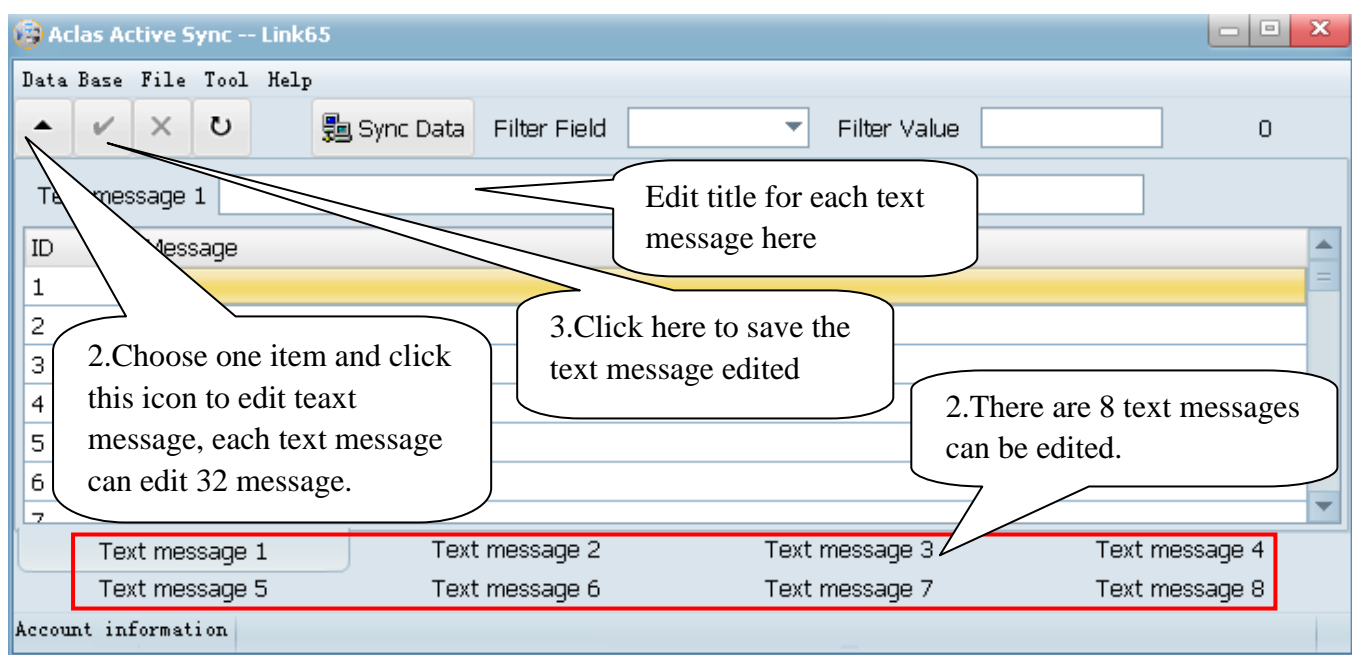
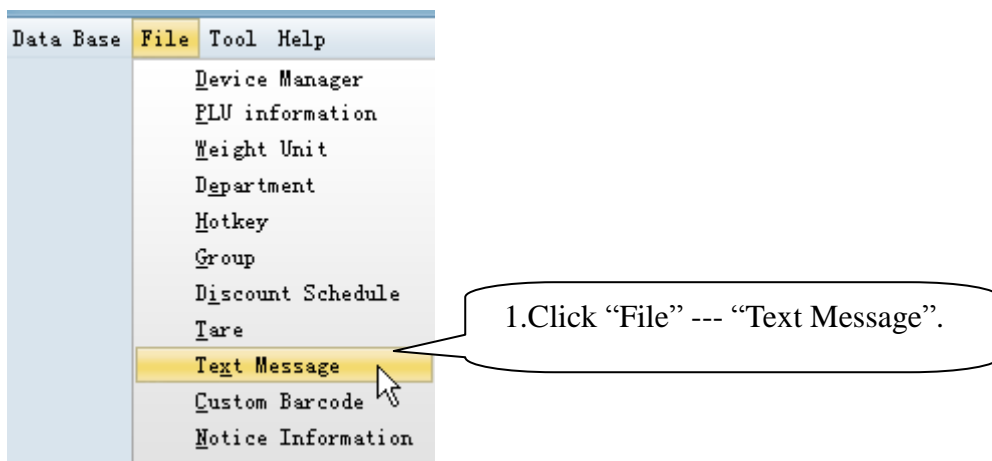



## 6.5. Tare Edition

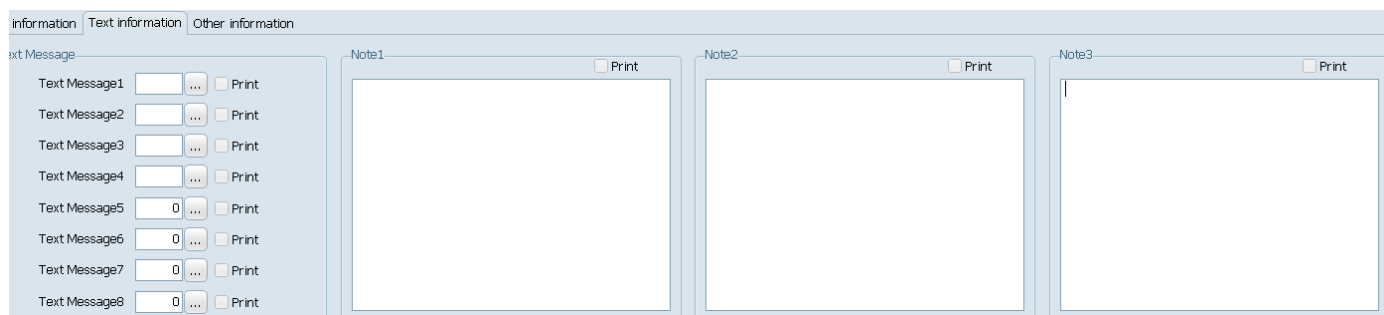


**Note:** When using tare table, e=2g. After editing tare modes, input the tare ID on the numerical key on the scale, and then press "Tare" key on the scale, and the customer display shows "-0.006kg" on the weight column.

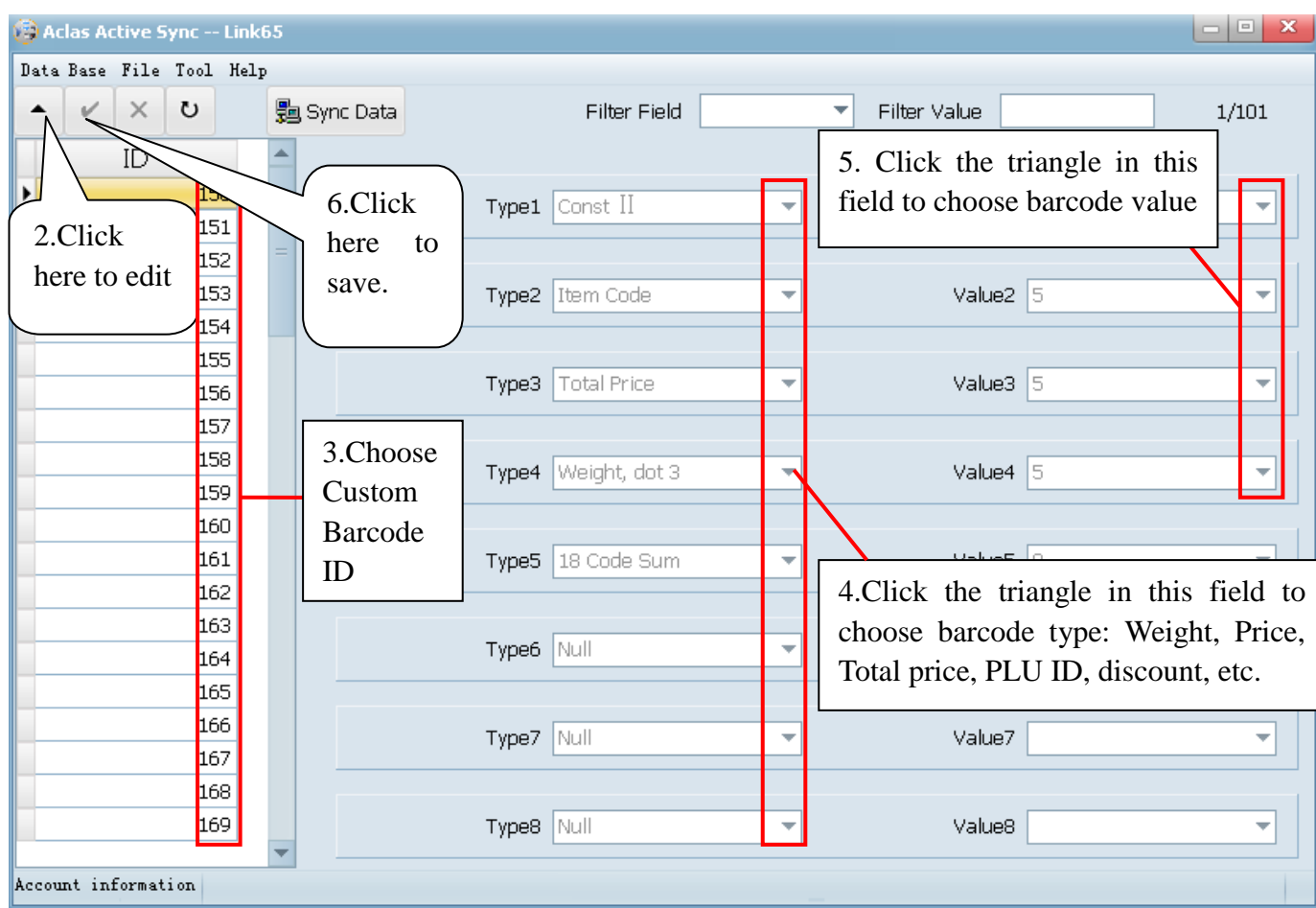
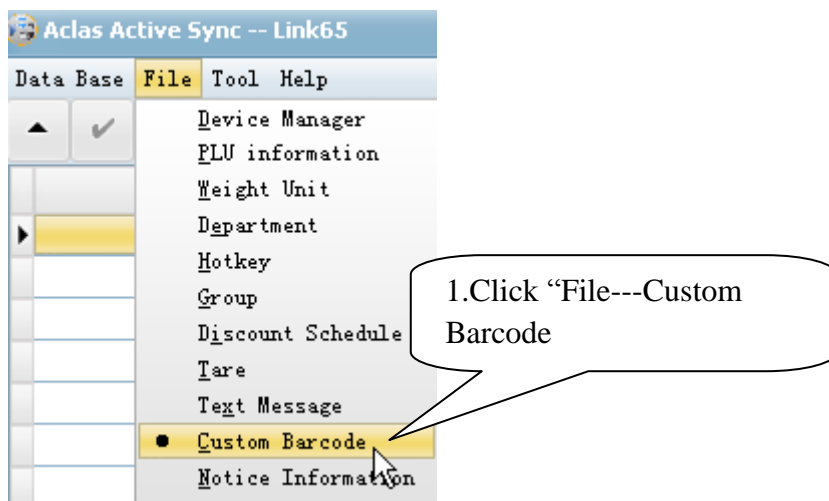
## 6.6. Text Message Edition



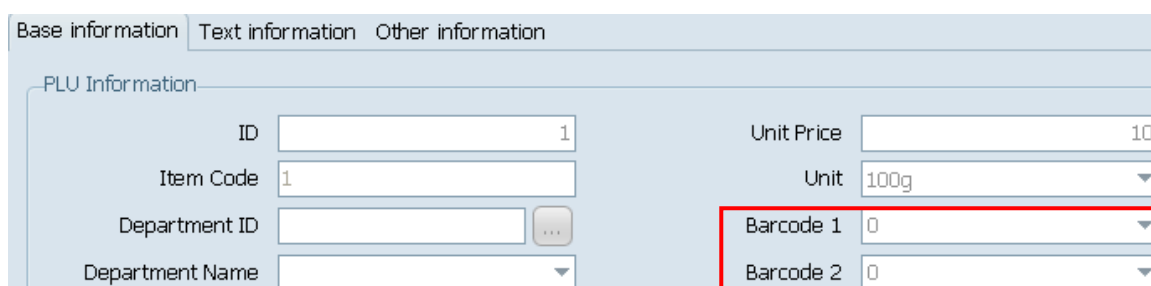
**Note:** when using text message, refer to [chapter 6.1](#), click "File—PLU information---Text information", and click the search icon  to choose messages (choosing among 32) for each text message on the pop-up window.



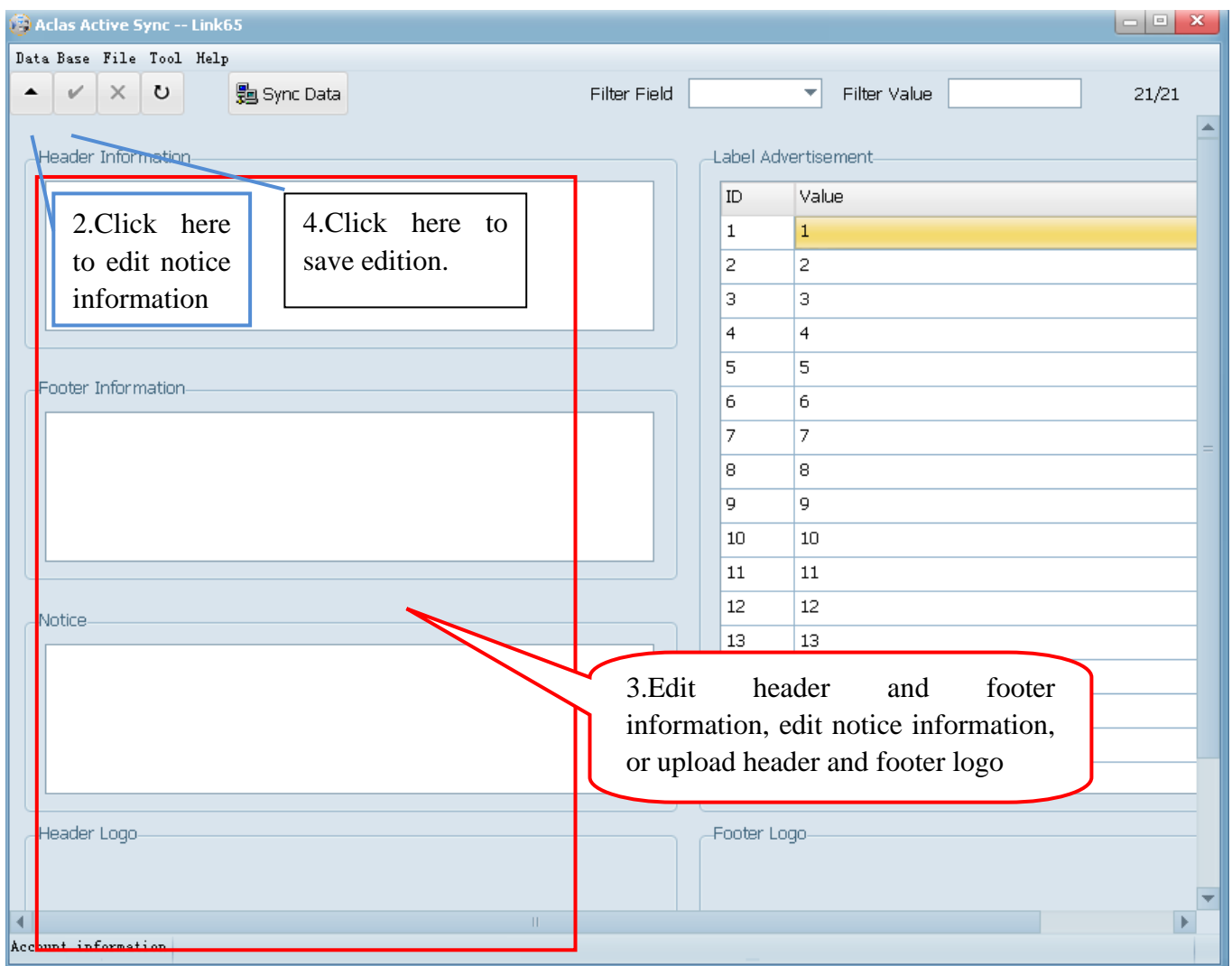
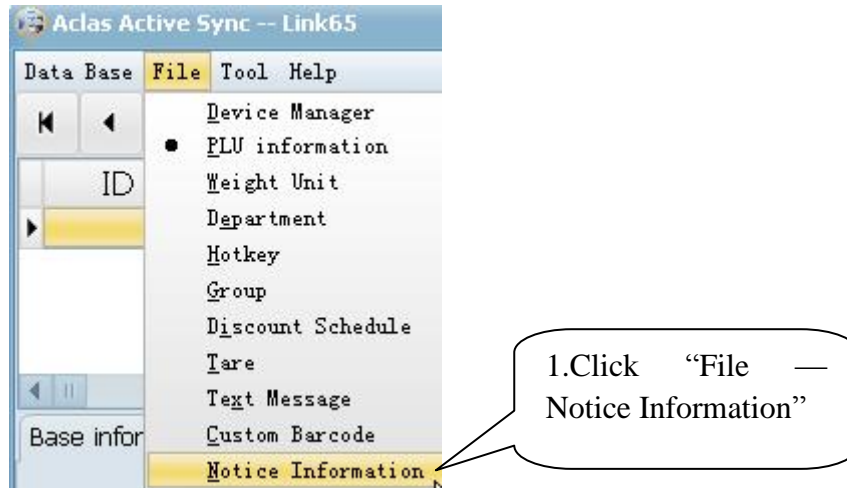
## 6.7. Custom Barcode Edition



Note: When using this custom barcode type, please refer to chapter 6.1 “File—PLU Information—basic information –Barcode”, ID 1~99 are fixed barcode type (please refer to “Appendix: Barcode Coding List” in scale user manual), 150~250 are custom barcodes.



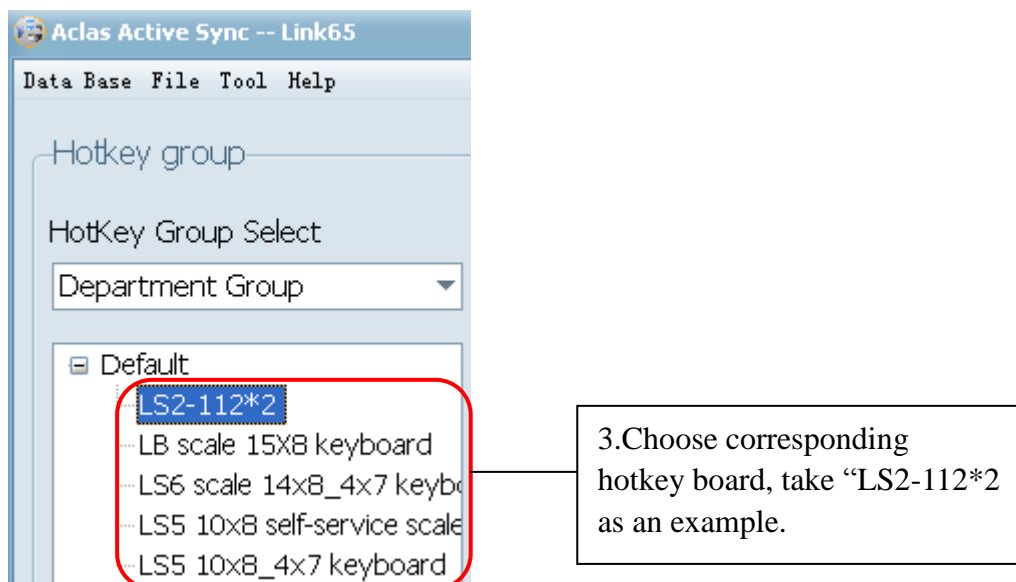
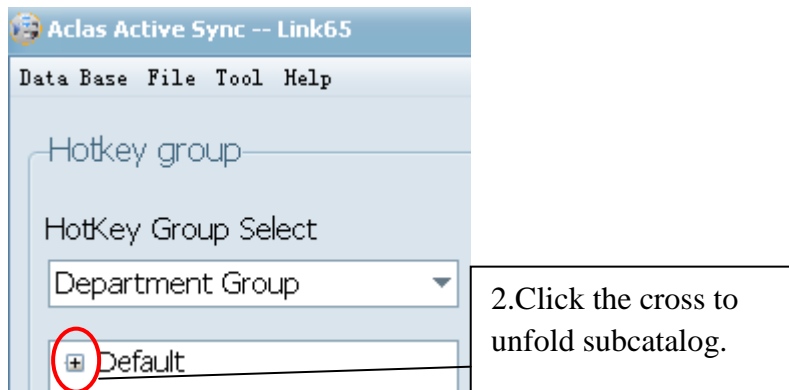
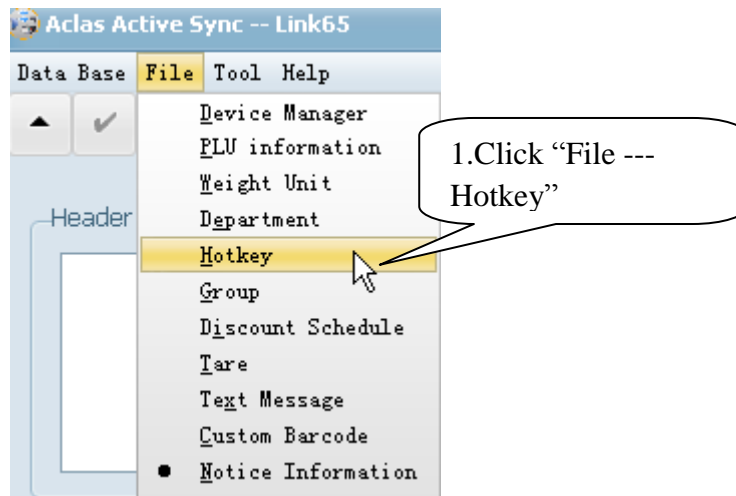
## 6.8. Notice Information Edition

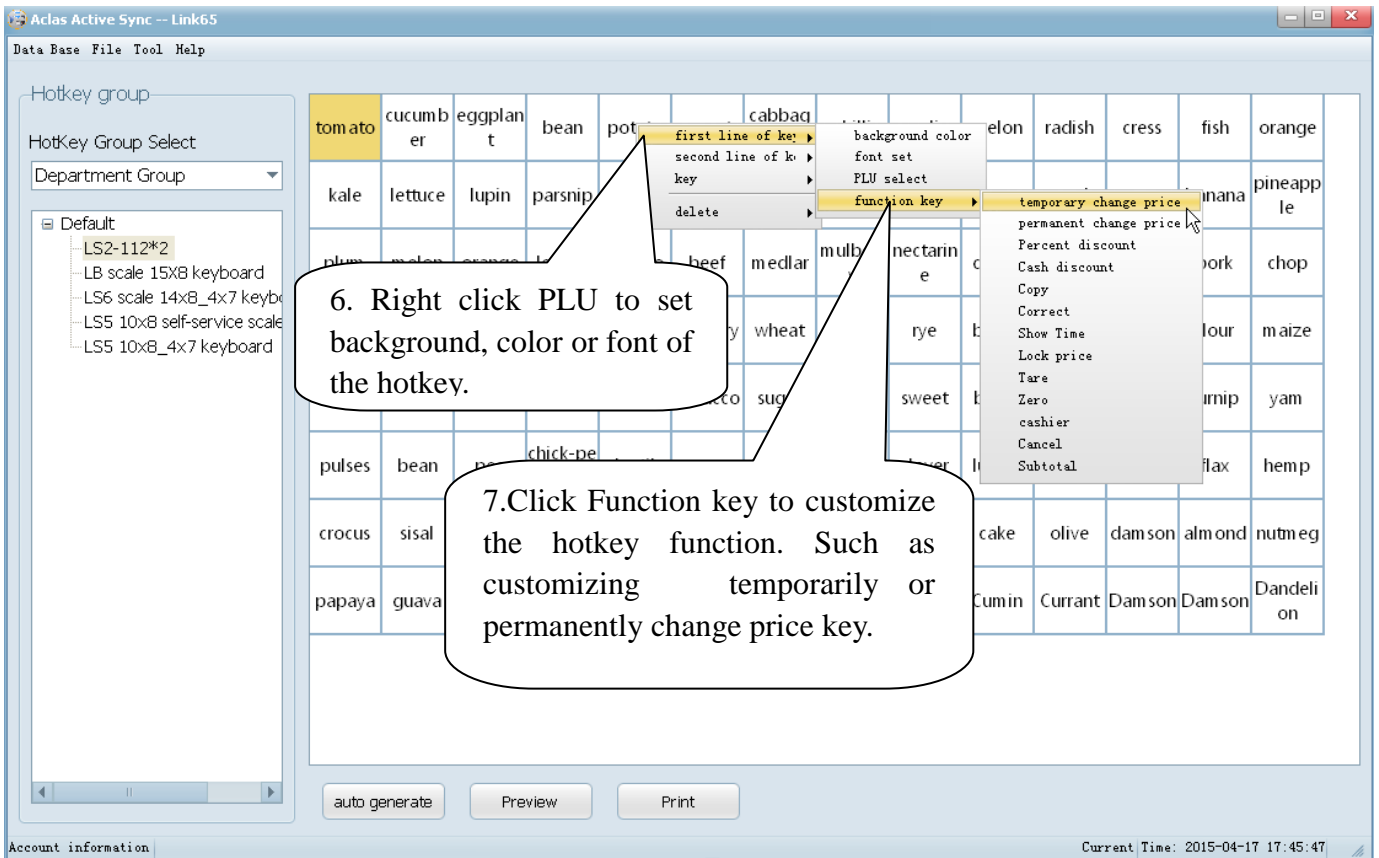
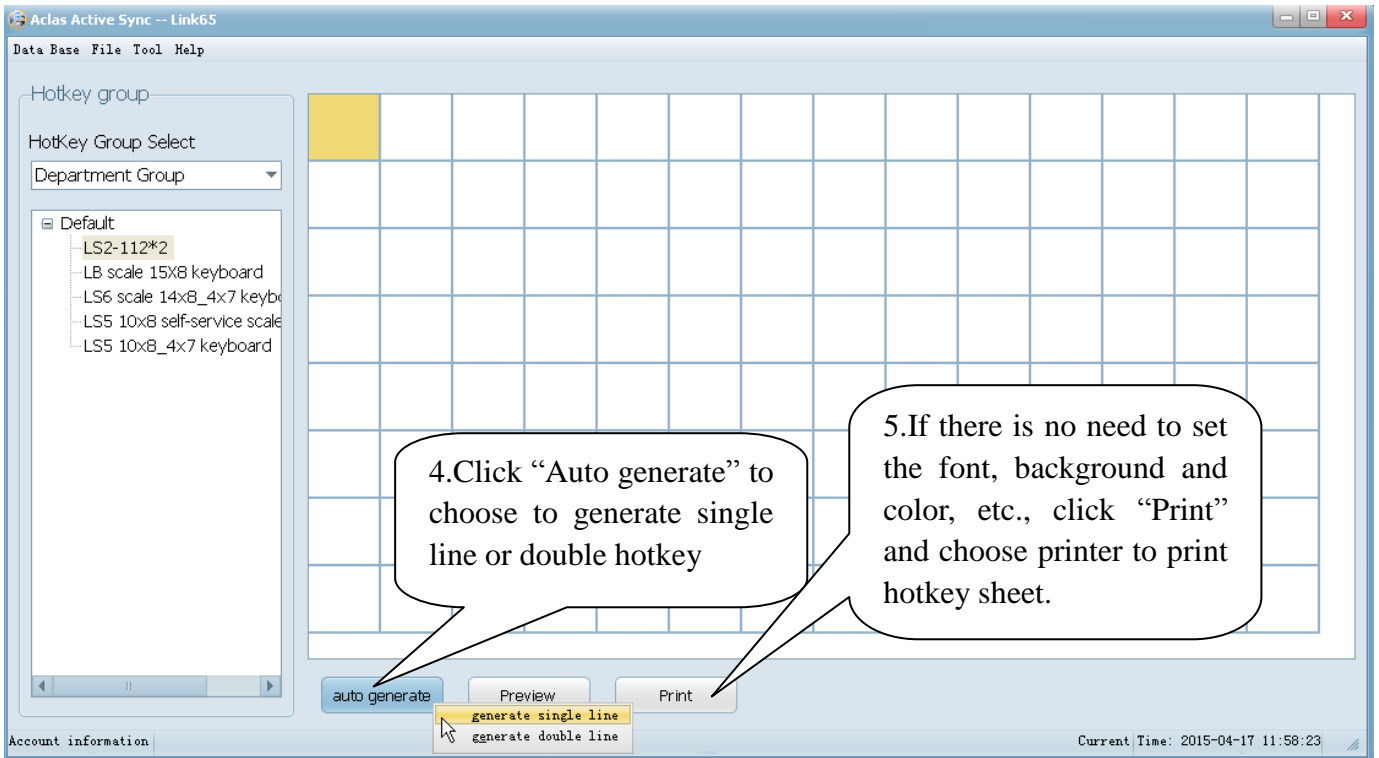


**Note:** When upload Logo, please make sure the pictures are black-and white, bmp format, and the size is not beyond 488\*142.

## 6.9. Hotkey

### 6.9.1. Hotkey Edition



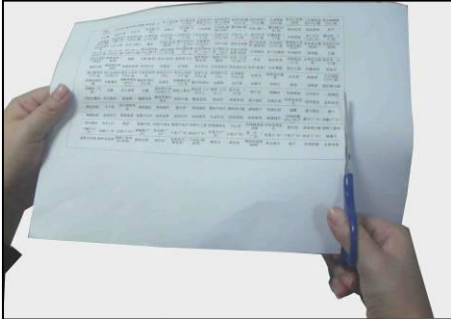




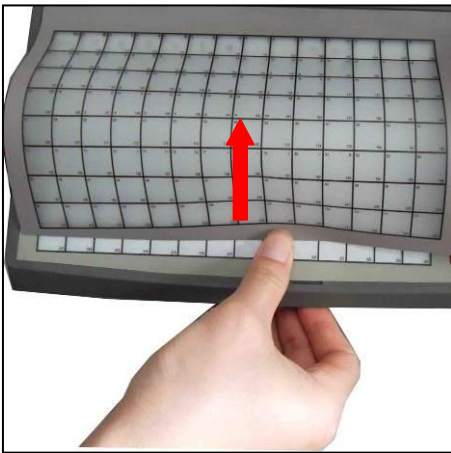
## 6.9.2. Hotkey Installation

**Note:** Please refer to “PC software management/Hotkey” in attached CD.

Cut the hotkey sheet down and insert the hotkey sheet into the keyboard. Please take below pictures for your references:



1) Cut the hotkey sheet down.



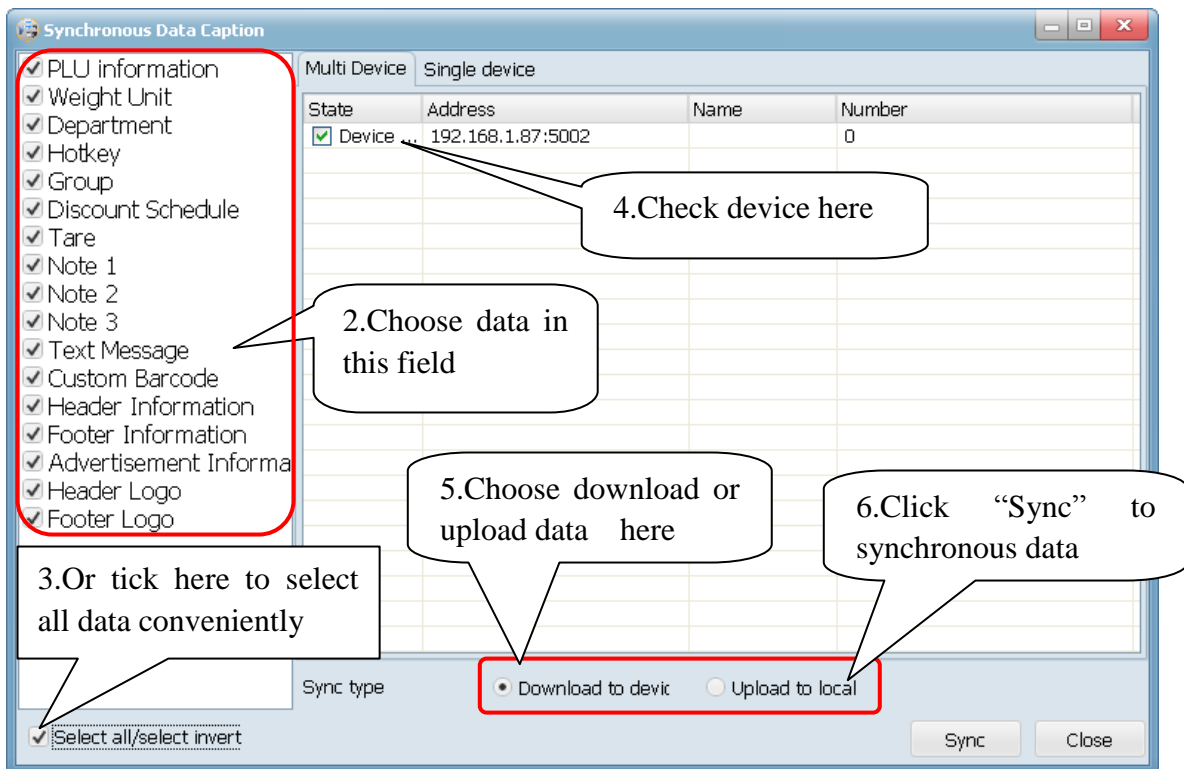
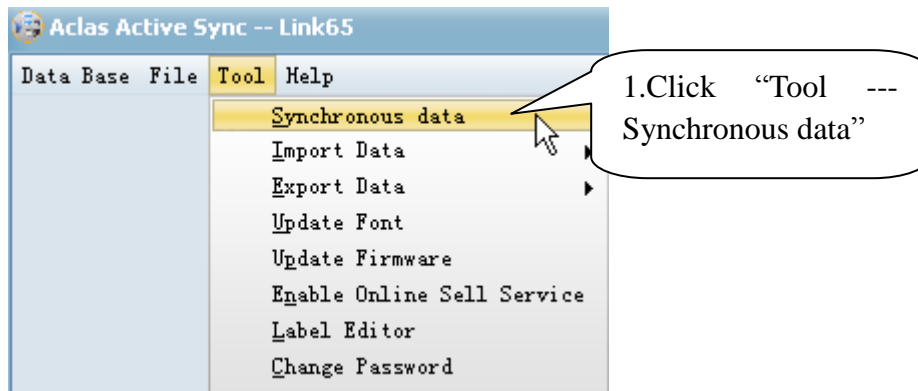
2) Push up the hotkey pad from bottom according to the arrow head.



3) Insert the hotkey sheet into the hotkey pad.

# 7 Synchronous Data

**Note:** “Synchronous Data” means “upload data from scale to PC” or “download data from PC to scale”. Before synchronous data between scale and PC, please make sure the communication is OK!

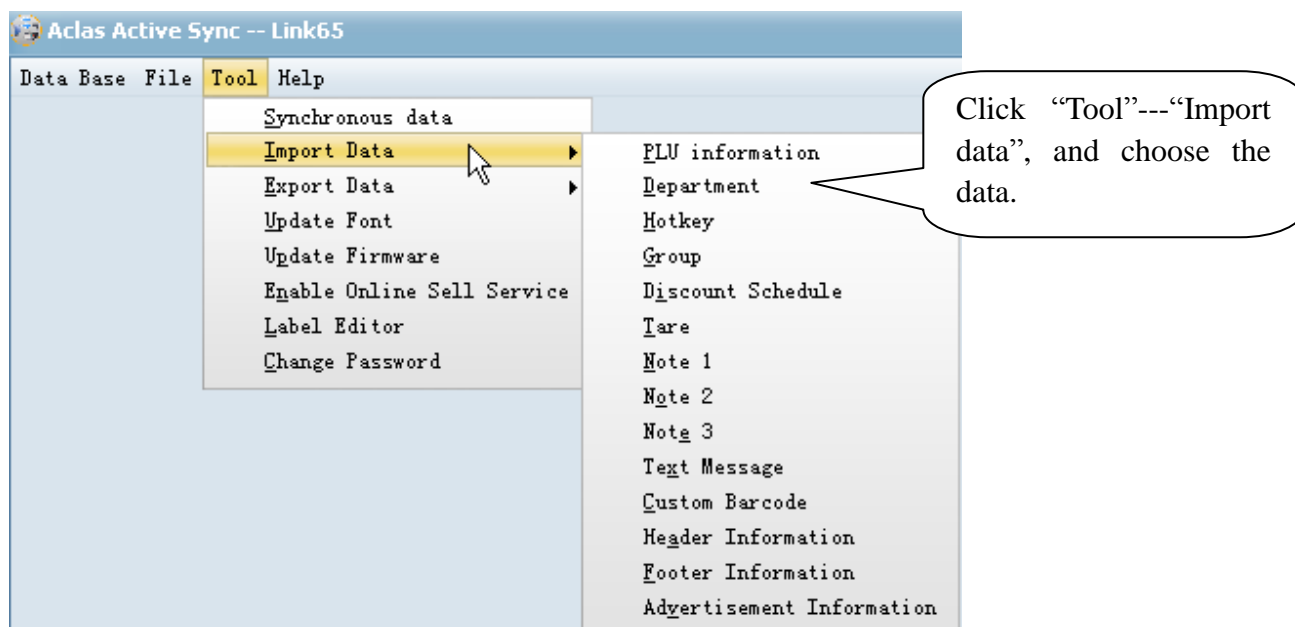


## 8 Import/Export Data

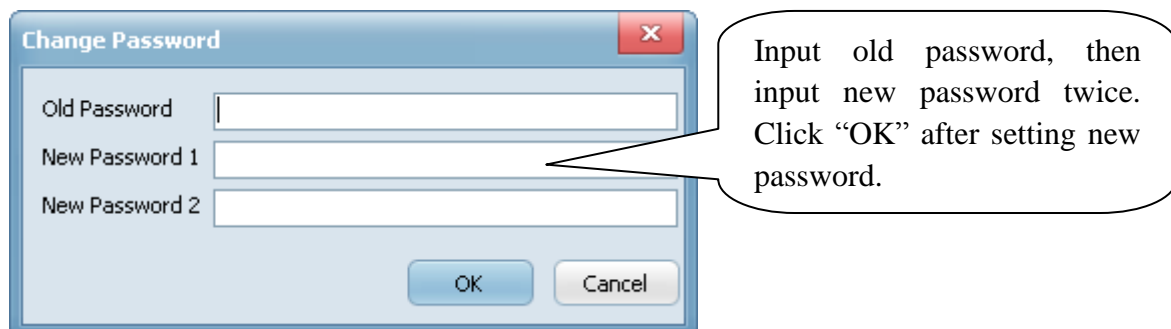
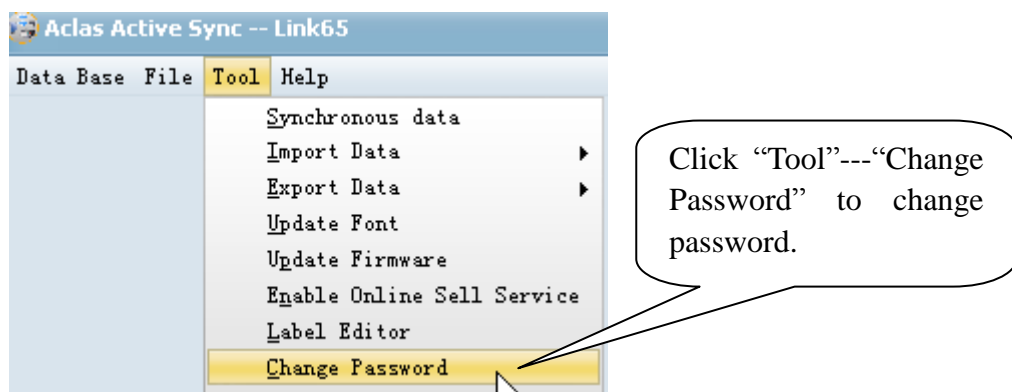
Import data: import data from PC to Link65 program, so as to synchronous to scale.

Export data: export data from link65 program to PC to save the data on PC.

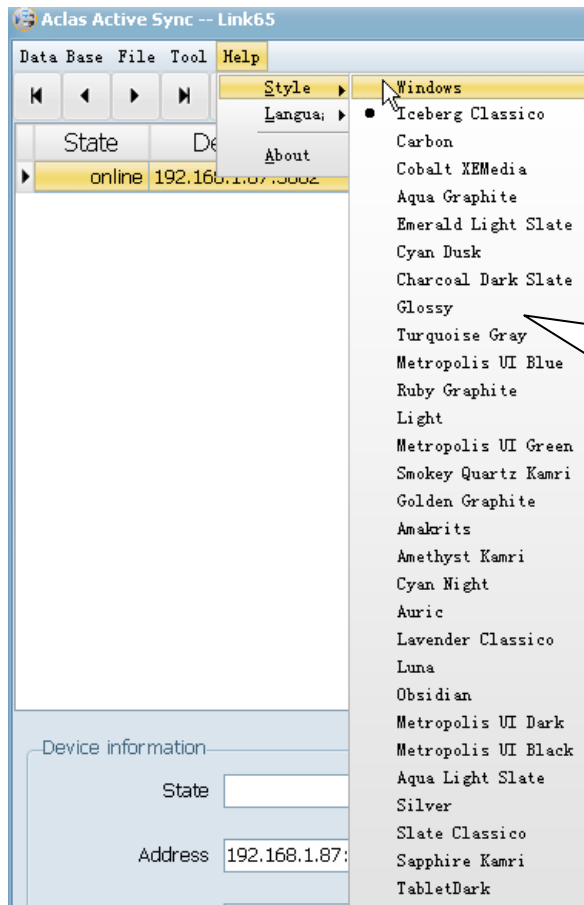
Method: click import data or export data, the choose data from PLU information, department, hotkey and so on the pop-up window, then choose the data location on the pop-up window, and click “Complete” after operation.



## 9 Change Password

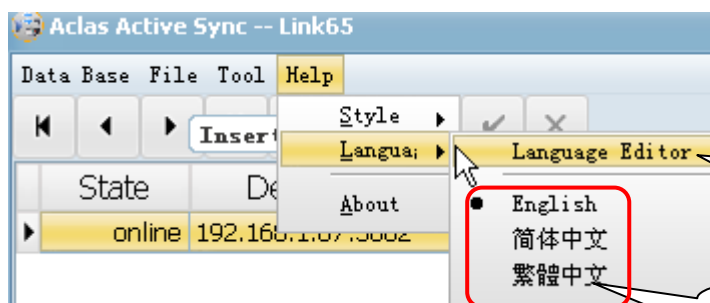


## 10 Change Style



Click "Help"---"Style", and choose one style among all the items on the pop-up window.

## 11 Transform Language and Modify Translation



Click "Help" --- "Language" --- "Language Editor", you can translate anew the items or menus in Link65 Program.

Transform Language here, and restart the program.

Click “Help—Language—language editor” to enter into the translation interface, you can translate into Chinese-traditional characters and English.



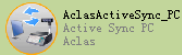

# 12 Package Type


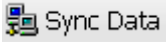
## 11.1. Fixed Weight Mode

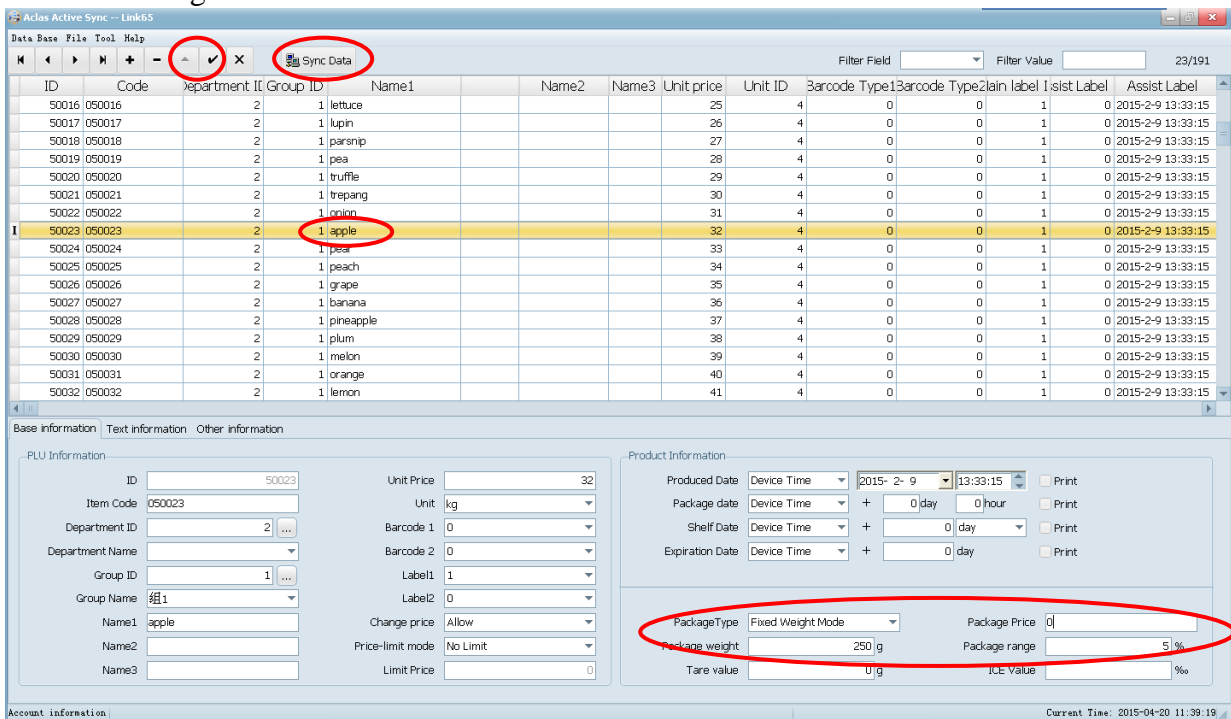
This function is available by presetting on PC software first.

For example: pack apple by the fixed weight 0.25kg, and the corresponding hotkey is 50023.

The operation processes are as follows:

Open AclasActiveSync\_PC  on your PC. Click “File”---“PLU information”, choose the column apple, and then click the edit icon  on the toolbar. Choose ‘Fixed weight Mode’ in the column ‘Package Type’; input 250g in the column ‘Package Weight’; input 5% in the column ‘Package range’.

Click the save icon  on the tool bar to save the settings. Then click “Sync Data”  to download the setting data to scale.

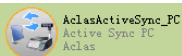




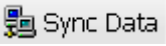
## 11.2. Fixed Price Mode

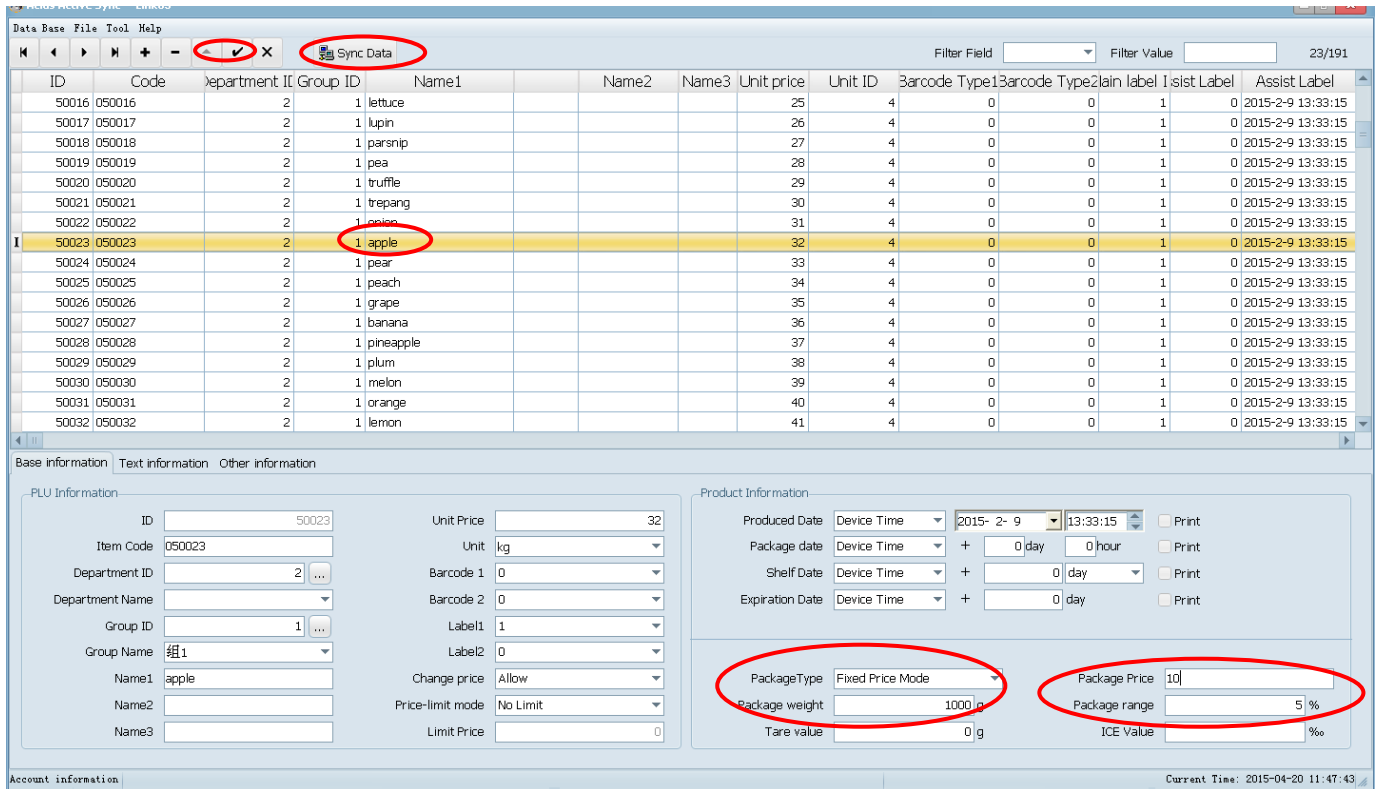
This function is available by presetting on PC software first.

For example: pack apple by the fixed price 1kg, its unit price is 10 ¥/kg, and the corresponding hotkey is 50023.

The operation processes are as follows:

Open AclasActiveSync\_PC  on your PC. Click “File”---“PLU information”, choose the column apple, and then click the edit icon  on the toolbar. Choose ‘Fixed Price Mode’ in the column ‘Package Type’; input 1000g in the column ‘Package Weight’; input 10 in the column “Package Price”; input 5% in the column ‘Package range’. Click the save icon  on the tool bar to save the settings.

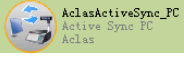



Then click “Sync Data”  to download the setting data to scale. When selling, the total price is the unit price preset.



### 11.3. Fixed Weight and Price Mode (Gift Basket)

This function is for selling gift basket, in which there are many kinds of items. This function can be used by pressing “Gift Basket” on scale, you can also preset on PC.

The operation processes are as follows:

Open AcllasActiveSync\_PC  on your PC. Click “File”---“PLU information”, choose the column apple (one of the items on the basket) as the “gift basket” hotkey. And then click the edit icon  on the toolbar. And input name 2 “Gift Basket”; input “0” in the column ‘Unit Price’; choose ‘Fixed Weight and Price Mode’ in the column ‘Package Type’; input “0” in “Tare Value” column. Click the save icon  on the tool bar to save the settings. Then click “Sync Data”  to download the setting data to scale.

Note: when using “Gift basket” function, “Tare value” can be set “0.000” or “0.001” for label printing mode. “0.001” means each item in the basket can be printed a label when weighting, and a sum label in the end; “0.000” means there is only a sum label in the end (there is no individual label during weighting).

Atlas Active Sync -- Link65

Data Base File Tool Help

Sync Data

Filter Field: Filter Value: 23/191

ID	Code	Department ID	Group ID	Name1	Name2	Name3	Unit price	Unit ID	Barcode Type1	Barcode Type2	Label1	Label2	Label3	Label4	Label5	Label6	Label7	Label8	Label9	Label10	
50016	050016	2	1	lettuce			25	4	0	0	0	1	0	0	0	0	0	0	0	0	0
50017	050017	2	1	lupin			26	4	0	0	0	1	0	0	0	0	0	0	0	0	0
50018	050018	2	1	parsnip			27	4	0	0	0	1	0	0	0	0	0	0	0	0	0
50019	050019	2	1	pea			28	4	0	0	0	1	0	0	0	0	0	0	0	0	0
50020	050020	2	1	truffle			29	4	0	0	0	1	0	0	0	0	0	0	0	0	0
50021	050021	2	1	trepang			30	4	0	0	0	1	0	0	0	0	0	0	0	0	0
50022	050022	2	1	onion			31	4	0	0	0	1	0	0	0	0	0	0	0	0	0
50023	050023	2	1	apple	Gift Basket		0	4	0	0	0	1	0	0	0	0	0	0	0	0	0
50024	050024	2	1	pear			33	4	0	0	0	1	0	0	0	0	0	0	0	0	0
50025	050025	2	1	peach			34	4	0	0	0	1	0	0	0	0	0	0	0	0	0
50026	050026	2	1	grape			35	4	0	0	0	1	0	0	0	0	0	0	0	0	0
50027	050027	2	1	banana			36	4	0	0	0	1	0	0	0	0	0	0	0	0	0
50028	050028	2	1	pineapple			37	4	0	0	0	1	0	0	0	0	0	0	0	0	0
50029	050029	2	1	plum			38	4	0	0	0	1	0	0	0	0	0	0	0	0	0
50030	050030	2	1	melon			39	4	0	0	0	1	0	0	0	0	0	0	0	0	0
50031	050031	2	1	orange			40	4	0	0	0	1	0	0	0	0	0	0	0	0	0
50032	050032	2	1	lemon			41	4	0	0	0	1	0	0	0	0	0	0	0	0	0

Base information | Text information | Other information

PLU Information

ID: 50023  
 Item Code: 050023  
 Department ID: 2  
 Department Name:  
 Group ID: 1  
 Group Name: 组1  
 Name1: apple  
 Name2: Gift Basket  
 Name3:

Unit Price: 0  
 Unit: kg  
 Barcode 1: 0  
 Barcode 2: 0  
 Label1: 1  
 Label2: 0  
 Change price: Allow  
 Price-limit mode: No Limit  
 Limit Price: 0

Product Information

Produced Date: Device Time | 2015- 2- 9 | 13:33:15  
 Package date: Device Time | + 0 day | 0 hour  
 Shelf Date: Device Time | + 0 day  
 Expiration Date: Device Time | + 0 day

PackageType: Fixed Weight and Price Moc  
 Package weight: 0 g  
 Package Price: 0  
 Package range: 0 %  
 Tare value: 0 g  
 ICE Value: %

Account information | Current Time: 2015-04-20 13:33:10